

Wireless
Easy and Convenient

Independent Columns
No Steel Ropes

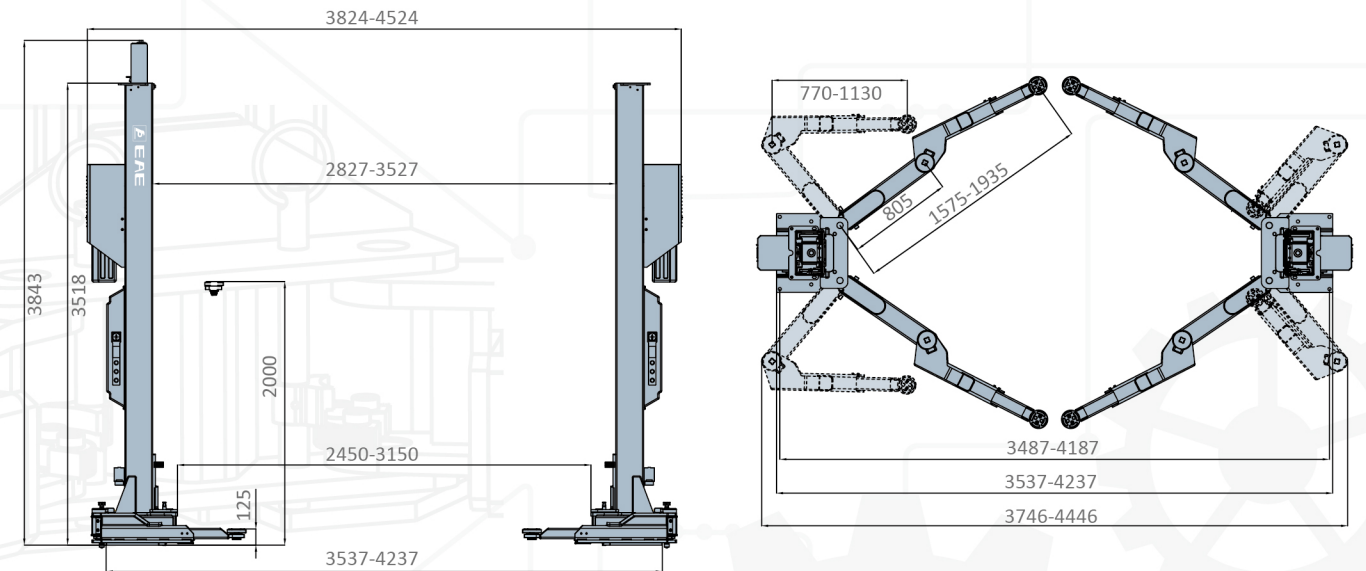
M Arms
Standard

CE

QUIKMULTI



OVERALL DIMENSION



TECHNICAL DATA

| MODEL NO. | E26 |
|----------------------------------|-----------------------------|
| Lifting capacity | 6.5T |
| Max lifting height | 2000mm |
| Min height | 125mm |
| Lifting time | Approx. 45S |
| Motor | 2.2kWx2 |
| Drive-through width (Adjustable) | 2450-3150mm |
| Overall height | 3843mm |
| Electricity supply | According To Customer Needs |

* Max. Lifting height is measured with adjustable screw pads in highest position.
* Machine shown with optional equipment. Actual product appearance may differ.



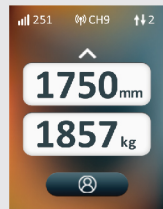
E26

INDEPENDENT TWO COLUMN LIFT

- Rated Capacity 6500kg, suitable for most sedans, heavy-duty SUVs, pickup trucks and vans.
- Wireless synchronized hydraulic control system, capable of correcting height variations of 50mm or less during lifting cycles.
- Pure hydraulic drive, no mechanical lifting element likes chains or steel wires. No maintenance and safety concerns associated with chains or steel cables.
- Flexible installation width to accommodate various vehicle sizes and installation spaces, recommended range: 2827-3527 mm.
- M-Arms provide extensive wheelbase compatibility
- Dual power units (2.2 kW x 2) for powerful capability, 45 seconds from bottom to top under rated load.
- Push-button control available at both columns for convenient and efficient operation.
- 3.5-inch touchscreen display for system setup and real-time height monitoring.
- APS control enables direct downward movement with safety lock disengaged.
- The latch monitoring device determines lowering logic (whether to lower directly or raise first before lowering) .
- Low-position stop and audible alarm for final travel below the stop position. No rail guards on the lift arms.
- Automatic engaging and disengaging swing arm locking device. Engage when raised and disengage at the lowest position.
- Pre-fixed hydraulic pressure prevents overloading.
- 24V Safe Control System prevents electric shock.
- Dual safety against hydraulic leakage through mechanical latch and anti- burst hydraulic valve.



Intelligent Control System



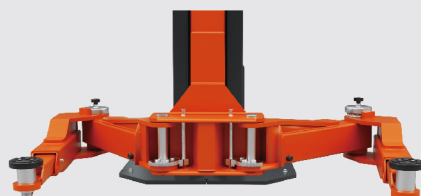
HMI Screen
(Optional Load Display)



Control Panel



Height Limit Switch and
Displacement Sensor



M arms