

**4.0T**  
Lifting Capacity

**180MM**  
Drive-on Height

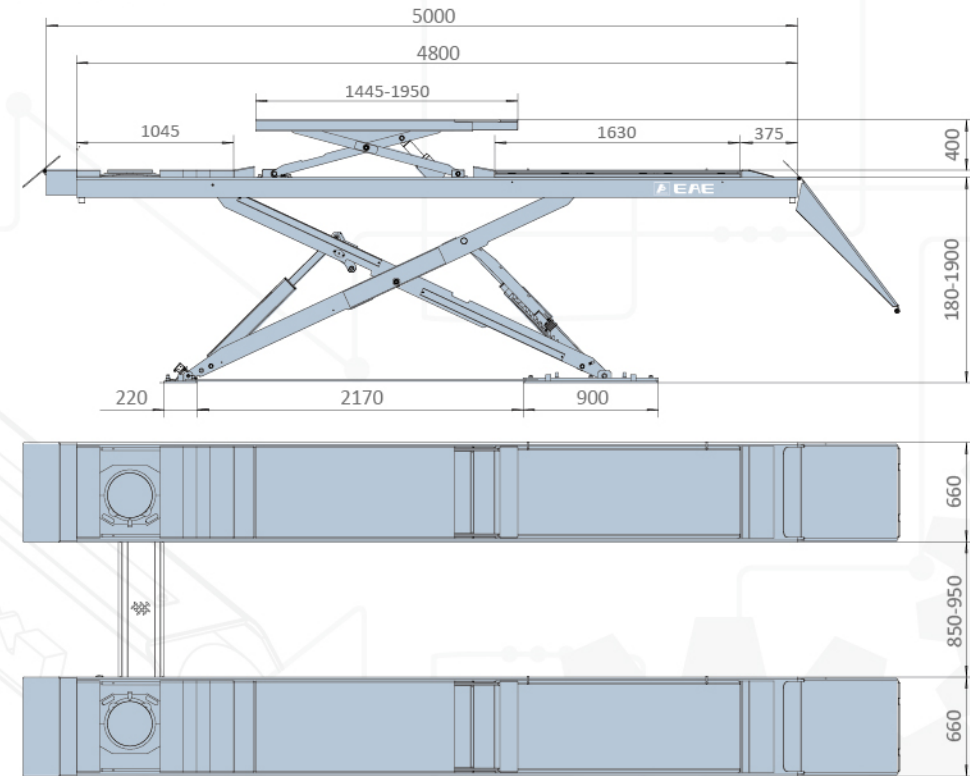
**Surface Installation**  
No More Concrete Work, Ramps Included



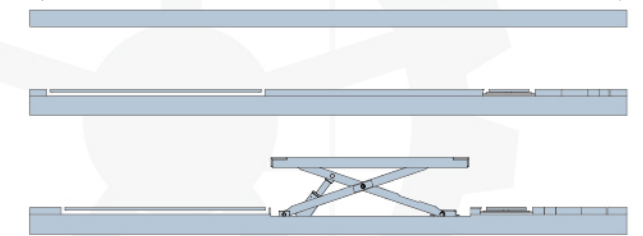
**OVERALL DIMENSION**



6604BWF



- S Flat platforms
- B Platforms with front recesses and rear slip plates
- BWF Platforms with front recesses, rear slip plates, and wheel free lifts



**6604**

**LOW PROFILE SCISSOR LIFT**

- 4.0T lifting capacity.
- Above-ground installation.
- Low profile runway demands less space.
- Infrared synchronization protection system.
- The great planeness of runways is perfect for high accuracy wheel aligning.
- Long slip plate and adjustable turntable positions accommodate different sizes of wheelbases.
- Reserved tracks on platforms fit for optional rolling jacks. (exclude type BWF)
- Pneumatic safety locking system
- 24V safe control system.
- Self-lubricated bushing and bearing.
- Safety descent alarming buzzer.
- Aluminum motor, no risks of overheating.

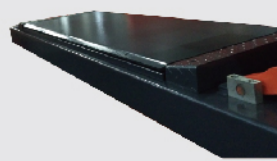
**TECHNICAL DATA**

<b>MODEL NO.</b>	6604
Lifting capacity	4.0T
Max. lifting height	1900mm
Min. height	180mm
Lifting time	Approx. 60S
Motor	3.5kW/3ph
Air supply	6-8bar
Platform width	660mm
Weight	3260kg(BWF)
Electricity supply	According To Customer Needs

\* Machine shown with optional equipment. Actual product appearance may differ.



Turntable (Optional)



Rear side slip



Anti-abrasion Slider



Drive-on Ramp



Pneumatic Release Mechanical Lock



Wheel Free Lift (BWF) (4000KG)