

1.2T
Lifting Capacity

Dual-speed system
High Efficiency

Movable
Space Saving



MS12M
Hydraulic Driven



MS12MF
Hydraulic Driven
Electric mobile kit

New Energy Vehicle



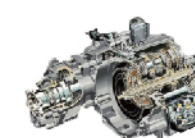
Battery Pack



Electric Engine



Engine



Gearbox



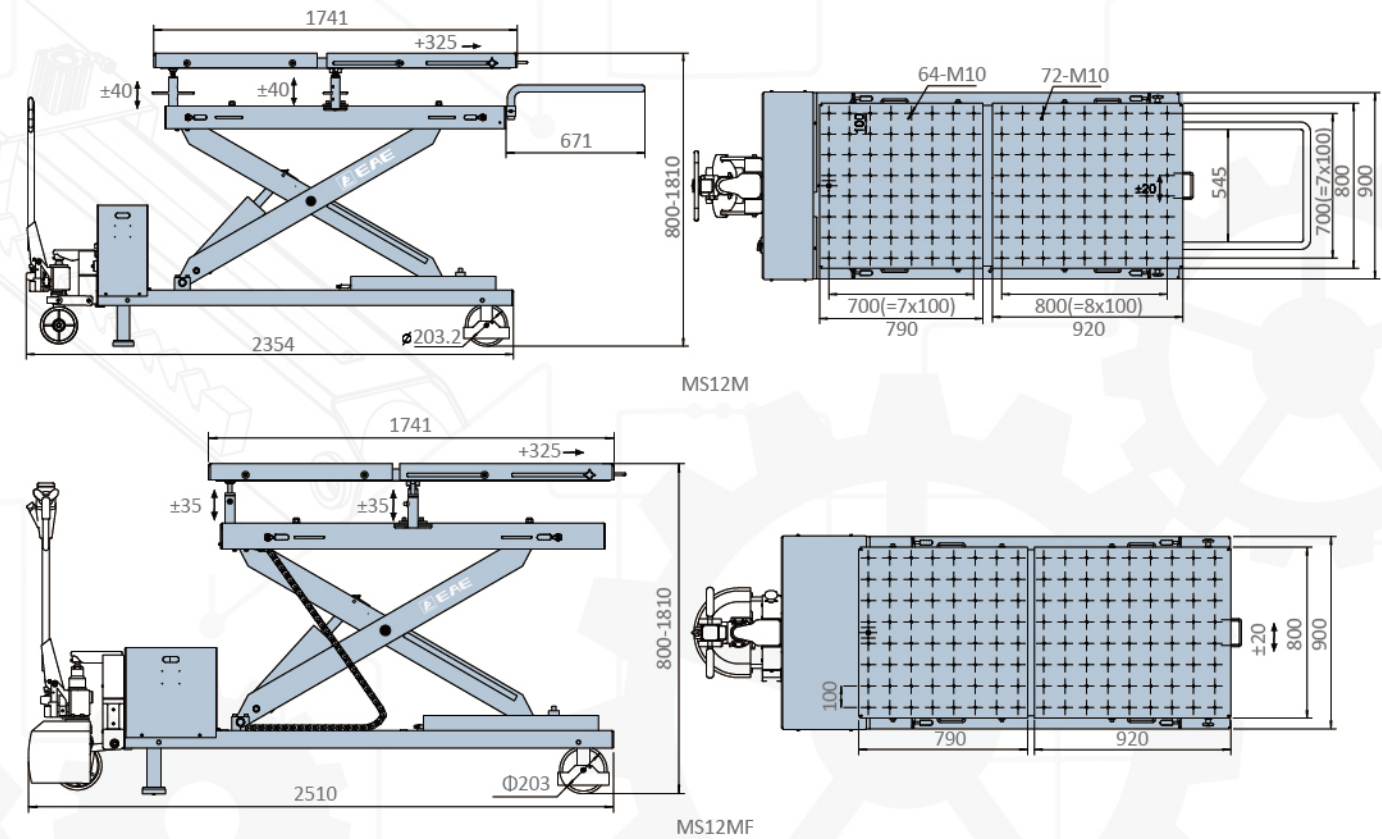
Drive Axle



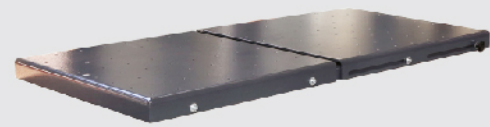
Fuel Tank

Fuel Vehicle

OVERALL DIMENSION



SCISSOR LIFT



Reserved holes (100mm x100mm)



A max extension of 325mm in length



Electric mobile kit
(MS12MF)



A dual-speed system for fast and precise lifting

MS12M/MS12MF

HYDRAULIC MOBILE LIFTING TABLE

- It is helpful to assemble and disassemble battery packs for electric vehicles and engine, gearbox, drive axle, fuel tank, suspension, bracket and chassis components for traditional vehicles.
- The suspend platform can tilt within a height of 40mm. The lower platform can move laterally within a distance of 20mm. This could meet multiple practical needs.
- Reserved holes (100mm x100mm) on the working table for positioning and fixing components with specialized fixtures.
- The lifting table also features a dual-speed system for fast and precise lifting.
- Maintain an ease and stable running and prolong the service time of shaft bearings.
- Oil hose with double steel wire fabrications, which has passed pressure test under 40MPa and can work under twice the nominal working pressure without breakage.
- Electric mobile kit let it be freely moved without much effort. (MS12MF)
- Electrically released mechanical locking system.
- 24V Control System Three-pin plug.
- Hand-held button control with stop function.

TECHNICAL DATA

MODEL NO.	MS12M	MS12MF
Max. capacity	1.2T	1.2T
Max. height	1810mm	1810mm
Min. Height	800mm	800mm
Platform length	1741mm+325mm	1741mm+325mm
Platform width	800mm	800mm
Voltage	110V/220V/230V	DC12Vx2
Motor	1.5kW	2.0kW
Full stroke time(Normal)	Approx.45S	Approx.35S
Full stroke time(Slow)	Approx.100S	80S-90S

* Machine shown with optional equipment. Actual product appearance may differ.

