

Model No. EE-6604BWF

Long platform scissor lift

Low Profile

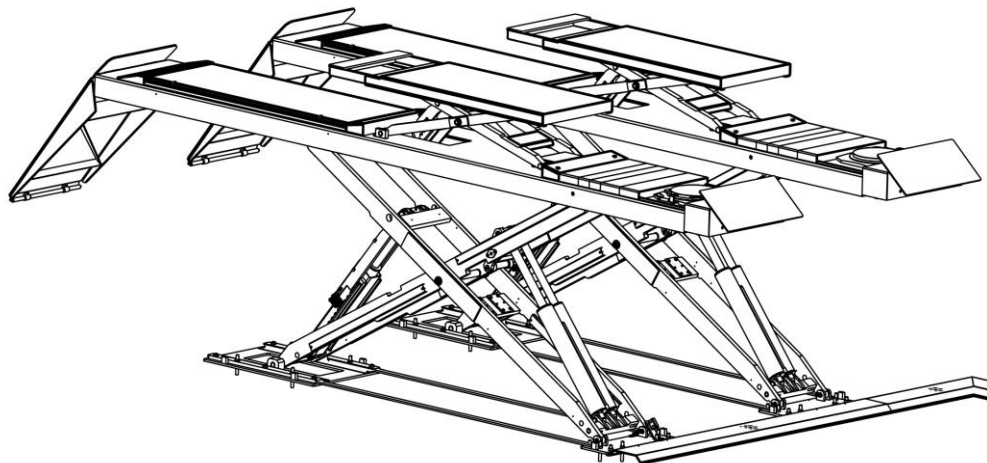
With synchronization protection

Lifting Capacity 4000KG

Installation, Operation and Parts Manual



EAE



Distributed by

Please read this entire manual carefully and completely before installation or operation of the lift.

25/12/2023

www.eae-ae.com

IMPORTANT NOTES

Before start up, connecting and operating EAE products, it is absolutely essential that the operating instructions/owner's manual and, in particular the safety instructions are studied carefully. By doing so you can eliminate any uncertainties in handling EAE products and thus associated safety risks up front; something which is in the interest of you own safety and will ultimately help avoid damage to the device, When an EAE product is handed over to another person, not only the operating instructions but also the safety instructions and information on its designated use must be handed over to the person.

By using the product you agree the following conditions:

Copy right

The enclosed instructions are the property of EAE or its supplier, and are protected against duplication and reproduction by copyright laws, international agreements, and other domestic legislation. The reproduction or disclosure of instructions or an extract thereof is prohibited and offenders are liable to prosecution; EAE reserves the right or initiates criminal proceedings and asserts claims for damages in the event of infringements.

Warranty

The use of non-approved hardware will result in a modification of our products and thus to the exclusion of any liability or warranty, even if such hardware has been removed again in the interim.

It is not permissible to make any changes to our products and these are not only to be used together with genuine accessories and genuine replacement parts. Otherwise any warranty claims will be invalid.

Liability

The liability of EAE is limit to the amount that the customer has actually paid for this product. This exclusion of liability does not apply to damages caused through willful misconduct or gross negligence on the part of EAE.

All information in this manual is believed to be correct at time of publication.

EAE reserves the right to amend and alter technical data and composition without prior notice.

Please confirm at time of ordering.

IMPORTANT NOTES.....	2
SAFETY NOTES.....	4
1.1 Operation of lifting platforms	4
1.2 Checking of the lifting platforms.....	4
1.3 Important safety notices	5
1.4 Warning labels	6
1.5 Potential safety risks	7
1.6 Noise level	7
PACKING, STORAGE AND TRANSPORTATION	8
2.1 The lift was dismantled into 3 parts for transportation.....	8
2.2 Storage.....	8
2.3 Lifting and handling	8
PRODUCT DESCRIPTIONS	9
3.1 General descriptions	9
3.2 Construction of the lift	9
3.3 Dimensions.....	10
3.4 Safety device descriptions	10
3.5 Technical data.....	11
INSTALLATION INSTRUCTIONS	11
4.1 Preparations before installation	11
4.2 Installation attentions.....	12
4.3 General Installation Steps	13
4.4 Items to be checked after installation.....	15
OPERATION INSTRUCTIONS	16
5.1 Precautions	16
5.2 Descriptions of control panel	16
5.3 Working flow chart	17
5.4 Operation instructions	17
TROUBLE SHOOTING.....	19
MAINTENANCE.....	20
Annex 1, Floor Plan	22
Annex 2, Electrical schemes and parts list	24
Annex 3, Hydraulic schemes and parts list.....	29
Annex 4, Pneumatic scheme and parts list	33
Annex 5, Mechanically exploded drawings and parts list	34

SAFETY NOTES

1.1 Operation of lifting platforms

This lift is specially designed for lifting motor vehicles. Users are not allowed to use it for any other purposes. The applicable national regulations, laws and directives must be observed.

Only users aged 18 or above who have been instructed on how to operate the lifting platform and have proven their ability to do so to the owner are to be entrusted with unsupervised operation of lifting platforms. The task of operating the lifting platforms must be granted in writing.

Before loading a vehicle onto the lifting platform, users should study the original operation instructions and familiarize themselves with the operating procedures in several trial runs.

1.2 Checking of the lifting platforms

Checks are to be based on the following directives and regulations:

- Basic principles for testing lifting platforms
- The basic safety requirements stipulated in the directive 2006/42/EC
- Harmonized European standards
- The applicable accident prevention regulations

The checks are to be organized by the user of the lifting platform. The user is responsible for appointing an expert or qualified person to perform checking.

The user bears special responsibility if employees of the company are appointed as experts or qualified persons.

1.2.1 Scope of checking

Regular checking essentially involves performing a visual inspection and a functional test. This includes checking the condition of the components and equipment, checking that the safety systems are complete and functioning properly and that the inspection log book is completely filled in. The scope of exceptional checking depends on the nature and extent of any structural modification or repair work.

1.2.2 Regular checking

After initial commissioning, lifting platforms are to be checked by a qualified person at intervals of not longer than one year.

A qualified person is somebody with the training and experience required to possess sufficient knowledge of lifting platforms and who is sufficiently familiar with the pertinent national regulations, accident prevention regulations and generally acknowledged rules of engineering to be able to assess the safe operating condition of lifting platforms.

1.2.3 Exceptional checking

Lifting platforms with a lift height of more than 2 meters and lifting platforms intended for use with people standing under the load bearing elements of the load are to be checked by an expert prior or reuse following structural modifications and major repairs to load bearing components.

An expert is somebody with the training and experience required to possess specialist knowledge of lifting platforms and who is sufficiently familiar with the pertinent national work safety regulations, accident prevention regulations and generally acknowledged rules of engineering to be able to check and give an expert opinion on lifting platforms.

1.3 Important safety notices

- 1.3.1 Recommend for indoor use only. DO not expose the lift to rain, snow or excessive moisture.
- 1.3.2 Only use this lift on a surface that is stable, level and dry and not slippery, and capable of sustaining the load. Do not install the lift on any asphalt surface.
- 1.3.3 Read and understand all safety warnings before operating the lift.
- 1.3.4 Do not leave the controls while the lift is still in motion.
- 1.3.5 Keep hands and feet away from any moving parts. Keep feet clear of the lift when lowering.
- 1.3.6 Only these properly trained personnel can operate the lift.
- 1.3.7 Do not wear unfit clothes such as large clothes with flounces, tires, etc., which could be caught by moving parts of the lift.
- 1.3.8 To prevent evitable incidents, surrounding areas of the lift must be tidy and with nothing unconcerned.
- 1.3.9 The lift is simply designed to lift the entire body of vehicles, with its maximum weight within the lifting capacity.
- 1.3.10 always insure the safety locks are engaged before any attempt to work near or under the vehicle. Never remove safety related components from the lift. Do not use if safety related components are damaged or missing.
- 1.3.11 do not rock the vehicle while on the lift or remove any heavy component from vehicle that may cause excessive weight shift.
- 1.3.12 Check at any time the parts of the lift to ensure the agility of moving parts and the performance of synchronization. Ensure regular maintenance and if anything abnormal occurs, stop using the lift immediately and contact our dealers for help.
- 1.3.13 Lower the lift to its lowest position and do remember to cut off the power source when service finishes.
- 1.3.14 do not modify any parts of the lift without manufacturer's advice.
- 1.3.15 if the lift is going to be left unused for a long time, users are required to:
- a. Disconnect the power;
 - b. Empty the oil tank;
 - c. Lubricate the moving parts with grease.

WARNING: The warnings, cautions and instructions discussed in this instruction manual cannot cover all possible conditions and situations that may occur. It must be understood by the operator that common sense and caution are factors which cannot be built into this product, but must be supplied by the operator.

Attention: For environment protection, please dispose the disused oil in a proper way.

1.4 Warning labels

All safety warning labels are clearly depicted on the lift to ensure that the operator is aware of and avoid the dangers of using the lift in an incorrect manner. The labels must be kept clean and they have to be replaced if detached or damaged. Please read carefully the meaning of each label and memories them for future operation.

SAFETY ADVICE

540101444

 <p style="text-align: left; padding-left: 10px;">Only trained personnel are allowed to operate the lift.</p>	<p style="text-align: left; padding-left: 10px;">Always keep lift area clear when lowering or raising vehicle.</p> 
 <p style="text-align: left; padding-left: 10px;">Do not try to raise a vehicle exceeds the rated capacity.</p>	<p style="text-align: left; padding-left: 10px;">Never raise or lower a vehicle with one side platform.</p> 
 <p style="text-align: left; padding-left: 10px;">Watch closely the vehicle during raising or lowering.</p>	<p style="text-align: left; padding-left: 10px;">It is not allowed to work under the vehicle if safety teeth are not engaged.</p> 
 <p style="text-align: left; padding-left: 10px;">Make sure that two platforms are of equal height from the floor when safety teeth engaged.</p>	<p style="text-align: left; padding-left: 10px;">Avoid excessive rocking of vehicle while on lift.</p> 
 <p style="text-align: left; padding-left: 10px;">Do not climb onto the lift platforms or raised vehicle during lifting or lowering.</p>	<p style="text-align: left; padding-left: 10px;">Always keep the lift pit clean and clear of any objects or contaminants.</p> 
 <p style="text-align: left; padding-left: 10px;">Do not change the safety mechanism.</p>	<p style="text-align: left; padding-left: 10px;">Carryout maintenance regularly as indicated in the manual.</p> 

1.5 Potential safety risks

1.5.1 Mains voltage



Insulation damage and other faults may result in accessible components being live

Safety measures:

- Only ever use the power cord provided or a tested power cord.
- Replace wires with damaged insulation.
- Do not open the operating unit.

1.5.2 Risk of injury, danger of crushing



In the event of excessive vehicle weight, incorrect mounting of the vehicle or on removing heavy object, there is a risk of the vehicle falling off the lifting platform or tipping up.

Safety measures:

- The lifting platform is only ever to be employed for the intended purpose.
- Carefully study and heed all the information given in Section 1.4.
- Observe the warning notices for operation.

1.6 Noise level

Noise emitted during operating the lift should be less than 70dB. For your health consideration, it is suggested to place a noise detector in your working area.

PACKING, STORAGE AND TRANSPORTATION

Packing, lifting, handling, transporting operations must be performed only by experienced personnel with appropriate knowledge of the lift and after reading this manual.

2.1 The lift was dismantled into 3 parts for transportation

Name	Packed by	Dimension(mm)	Weight(kg)	Quantity
Control cabinet	Wooden case	500*470*1120	84	1
Power side platform	Carton with wooden base	5100*700*360	1550	1
The secondary platform	Carton with wooden base	5100*700*360	1550	1
Ramp	Bubble film	1300*680*250	106	1

2.2 Storage

The packs must be kept in a covered and protected area in a temperature range of -10°C to $+40^{\circ}\text{C}$. They must not be exposed to direct sunlight, rain or water.

Stacking the packs

We advise against stacking because the packs are not designed for this type of storage. The narrow base, heavy weight and large size of the packs make stacking difficult and potentially dangerous.

If stacking is unavoidable, use all appropriate precautions:

-never stack to more than 2 meters in height.

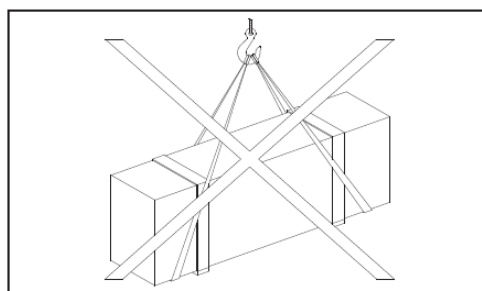
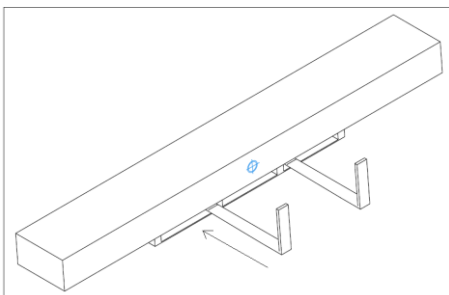
-never make stacks of single packs. Always stack pairs of packs in a cross pattern so that the base is bigger and the resulting stack is more stable. Once the stack is complete, restrain it using straps, ropes or other suitable methods.

A maximum of two packs can be stacked on lorries, in containers, and in railway wagons, on condition that the packs are strapped together and restrained to stop them falling.

2.3 Lifting and handling

The packs can be lifted and transported only by using lift trucks. The center of gravity and lashing points are marked on the packaging.

Never attempt to hoist or transport the unit using lifting slings.



Opening the packs

When the lift is delivered make sure that it has not been damaged during transportation and that all the parts specified on the packing list are present.

Packs must be opened adopting all the precautions required to avoid injury to persons (keep at a safe distance when cutting the straps) or damage to parts of the machine (be careful that no parts are dropped while you are opening the packing)

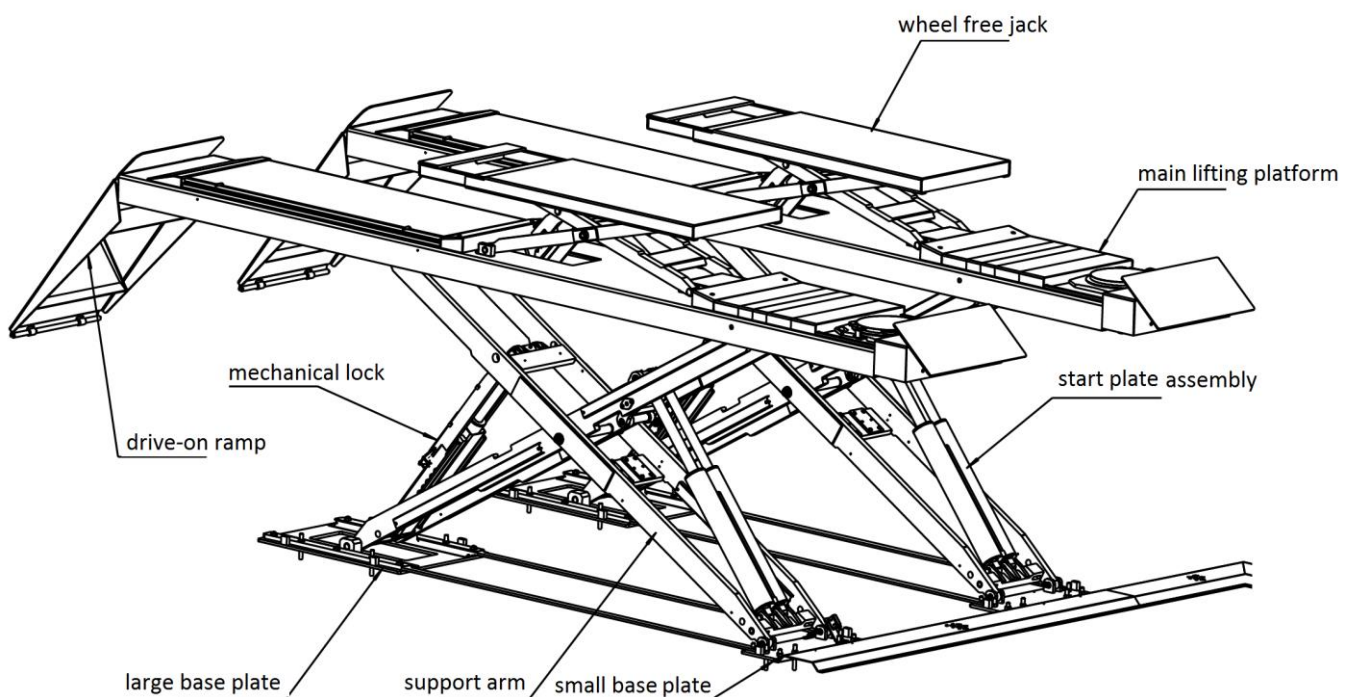
Take special care with the hydraulic power unit, the control panel and the platform cylinder.

PRODUCT DESCRIPTIONS

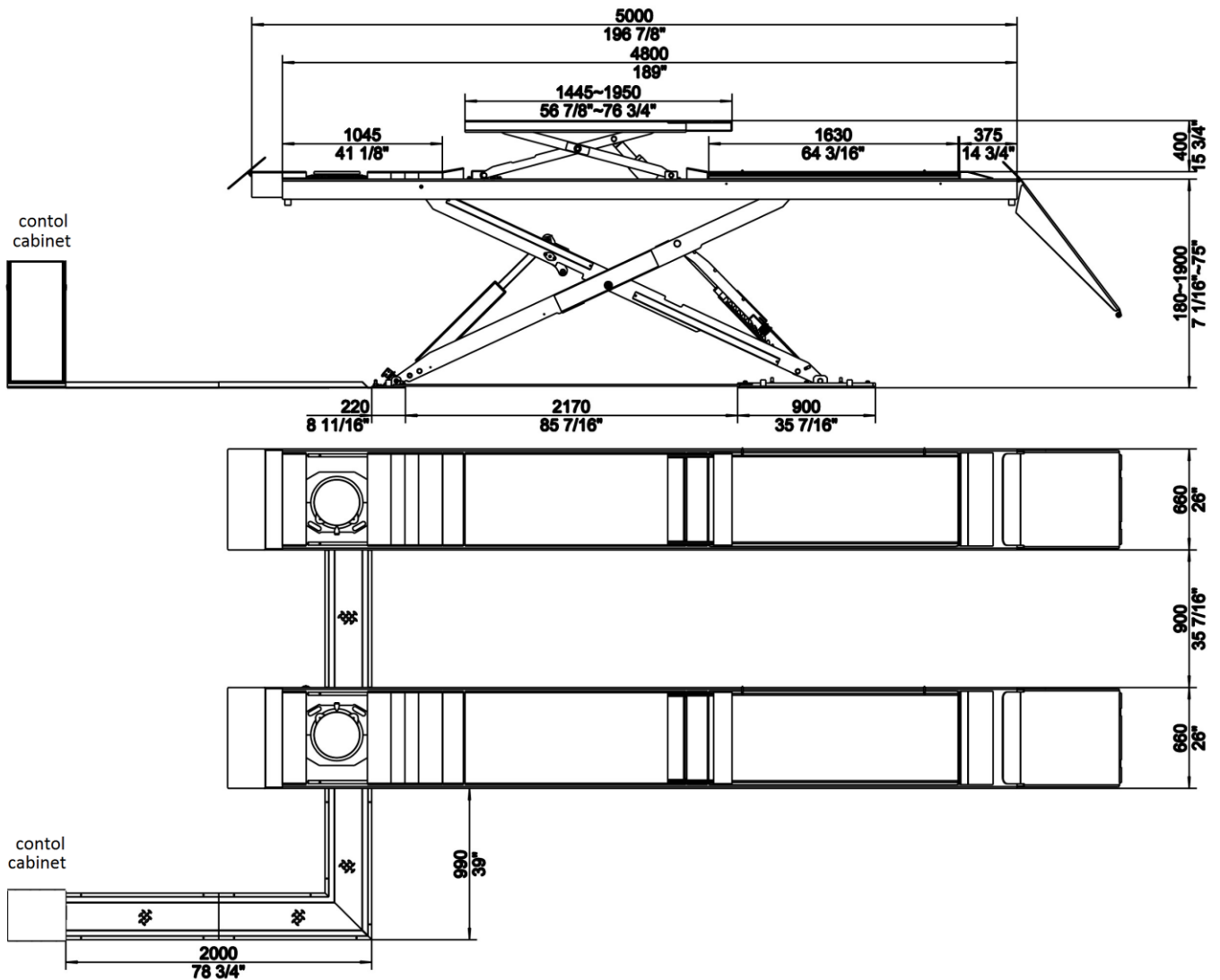
3.1 General descriptions

This is wheel support vehicle lift with auxiliary wheel free lifting device. It is preferably for surface mounting and is mainly composed by lifting platforms, base plates, oil cylinders and a set of operation unit. The gear pump works to make oil in the pump push upwards the pistons of oil cylinders. Thus, scissor brackets of the lift rise accordingly. The mechanical safety locking system ensures no slipping in case of hydraulic failure. Besides, designs like 24V working voltage of control box and limit switch, low-height alarming buzzer, anti-surge valves, etc have fully considered your personal security.

3.2 Construction of the lift



3.3 Dimensions



3.4 Safety device descriptions

NO.	Safety device	Function
1	Restrictive valve	Slow down descending speed in case of leaked hydraulic system.
2	Mechanical locking unit	Protect the lifting platform from falling down in case of failed hydraulic system.
3	24V operation voltage	Safety voltage for operators.
4	Max height limit switch for wheel free jack	Stop rising at a maximum height of above lifting platform.
5	Tip-up protection for wheel jack	Protect against tipping-up, in case of unevenly distributed load.
6	Tip-up protection for main lifting platforms	Protect lifting platform from tipping-up, in case load on it is not evenly distributed.

3.5 Technical data

Rated capacity(kg)	4000
Full raised height (mm)	1900
Full lowered height (mm)	180
Full raised time (with rated load)	Approx. 60s (3Ph,3.5kW motor)
Pneumatic working pressure (Bar)	6-8
Rated capacity of the wheel free jack (kg)	4000
Full raised height of wheel free jack (kg)	450
Oil tank volume (L)	18

INSTALLATION INSTRUCTIONS

4.1 Preparations before installation

4.1.1 Space requirements.

Refer to 3.3 for the dimensions of the lift. There must also be a clearance of at least 1 meter between the lifting platform and fixed elements (e.g. wall) in all lifting positions. There must be sufficient space at the ends of the lifting platform for driving vehicles on and off.

To stop vehicles colliding with the ceiling, it is advisable to fit an overhead light barrier in low ceiling buildings.

4.1.2 Foundations and connections

The user must have the following work performed before erecting the lift.

- Construction of the foundation following consultation with the manufacturer's customer service or an authorized service agent. Routing of the wiring to the installation location. **The user must provide fuse protection for the connection. Electrical system connection must be done by qualified electricians. Requirements for power supply cable of the installation site: at least 2.5mm² wire core for 3Ph power and 4.0mm² wire core for 1Ph power.**
- Refer also to the corresponding information on the name plate and in the operation instructions. **Before doing electrical connection, make sure the lift is electrically adapt to the local power supply.**
- Routing of the compressed air connection to the installation location. The user must install a service unit upstream of the connection.

4.1.3 Foundations preparations

Please refer to Annex1 for floor dimensions.

4.1.4 Tools and equipment needed for installation

Tool Name	Specification	Qty
Electrical drill	D16 drill bit.	1
Open spanner	D17-19mm	2
Adjustable spanner	bigger than D30mm	1
Cross socket screw driver	PH2	1

Tool Name	Specification	Qty
Quick spanner handle adapter/ Ratchet		1
Socket spanner	D24mm	1
Levelling device		1
Hammer	10 pounds	1
Truck lift	Capacity, 2500kg	1
Lifting strap	Capacity, 1000kg	2
Lifting strap	Capacity, 2000kg	1
Torque spanner	MD400	1

4.1.5 Checking parts

Unfold the package and check if any parts missed as per the following list. Do not hesitate to contact us in case any parts missed, but if you do not contact us and insist installing upon the lack of some parts, we as well as our dealers will not bear any responsibility for this and will charge for any parts subsequently demanded by the buyer.

S/N	Parts Name	Specification	Qty
1	Lifting platform	6604V2	2
2	Expansion bolt	M16*120	16
3	Control cabinet	3.5kW	1
4	Drive-on ramp	6604V2-A9	2
5	Protective cover A(L=2200)	6604V2-A13	1
6	Protective cover B(L=1000)	6604V2-A14	1
7	Protective cover C(L=1000)	6604V2-A15	1
8	Protective cover D(L=1000)	6604V2-A16	1
9	Cross socket cap head tapping screw	ST4.8*35	20
10	Plastic expansion tube	M10*40	20
11	Cross socket cap head screw	M6*12	4
12	Hex nut	M6	4
13	Flat washer	M6	4

4.2 Installation attentions

4.2.1 Tighten all hydraulic and electrical connections.

4.2.2 Tighten all screws, nuts and bolts.

4.2.3 Do not place any vehicle on the lift in the case of trial running.

4.3 General Installation Steps

Step 1: Dismantle the package and place lifting platforms onto initially prepared installation foundation with a forklift and lifting straps.

Raise the platform by using a forklift and 2 lifting straps until the mechanical lock is engaged. Dismantle the bolts that fix the platform and its wooden package and then hoist the platform onto the expected installation site.

Attention 1: Avoid scratching the painting surface and hoses.

Attention 2: Before hoisting, make sure the hoses and wires are well protected against damage.

Attention 3: It is necessary to hold the platform during the hoisting process. Irrelevant person is not allowed in installation area.

Step 2: Connect hydraulic system.

Connect the oil hoses fittings to the power unit as per the diagram for oil hose connection. Annex 3.

Attention: Connect as per the marks on the hoses and do not contaminate the hydraulic components during the connection.

It must be taken adequate care that all fittings are securely tightened. Severe leaking will occur if the hose fittings are not properly tightened.

Step 3: Connect the pneumatic release system

Connect the pneumatic release system by the diagram of air hose connection in Annex 4.

Attention: Do not contaminate the pneumatic components during the connection.

Set the pneumatic pressure between 6-8 bars.

Push upward the button indicated in the following fig and turn the button until the hand of the pressure meter points to the NUMBER "6" .

Push the button down thereafter.



turn to set air pressure



remove this screw to add oil into the oil cup

It is suggested to add 5# mechanical oil into the oil cup.

Adjust the oil dripping quantity using the button on top of the oil cup.



arrow mark

adjust oil dripping quantity

Step 4: Connect electrical wires.

Electrical connection must be done by qualified electricians.

Refer to Annex 2 when fix the electrical system.

Connect the wire connectors for raising and lowering limit switches

Connect the power supply cable to external electricity supply.

(For three phase power supply, if the lift doesn't raise and the motor may turn in the wrong direction, in such event, interchange wires U, V in the control cabinet).

Step 5: Fill with hydraulic oil.

ONLY CLEAN AND FRESH OIL ONLY. Lift must be fully lowered before changing or adding hydraulic oil.

It needs 18 liters of hydraulic oil.

Run the main and the secondary lift for several cycles and add more oil until the lifting platform can rise to the maximum rated height.

Note: It is suggested to use HM NO.46 hydraulic oil.

Use HM NO.32 hydraulic oil when average temperature is below 10°C.

Change the oil 6 months after initial use and change once per year thereafter.

Step 6: Levelling

Refer to 5.2 and 5.4 to get familiar with lift controls.

Turn SA3 to "OFF" mode before levelling operation.

Check the connection of the hydraulic and electrical system before levelling operation

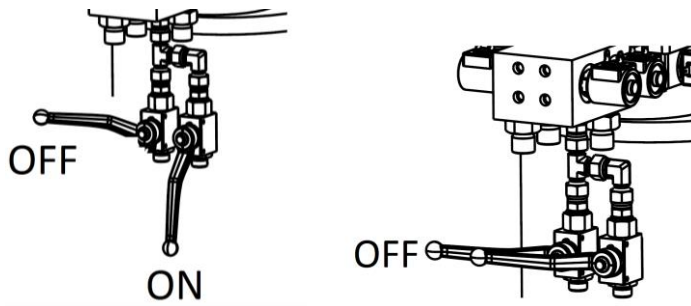
Level the main lift

Turn the selection switch SA2 to the main lift.

- 1) Turn SA1 to working mode and push the button UP to raise both wheel-support platforms to the maximal height.
- 2) Keep pushing the UP button for 1 more minute and then lower the platform completely to the bottom.
- 3) Push the UP button to raise the platforms to the maximal height again and keep pushing the UP button for 20 more seconds.
- 4) Push the Up and Down button to check the synchronization. Normally, the two platforms have been synchronized by this step.
- 5) Manually level the platform in case the level deviation is less than 20mm.

5.1) Turn SA1 to "Levelling" mode.

Turn on one of the two levelling valves and push the UP or DOWN button to adjust the height of a single platform until it is at the same level with the other platform. Turn off the valve before normal raising or lowering.


Level the wheel free jack

- 1) Turn SA2 on control panel to "wheel free jack" and turn SA1 to levelling mode.
- 2) Push UP button until both platform of the "wheel free jack" go utmost top to bleed air in the cylinders.
- 3) Push DOWN I until lower to the lowest position.

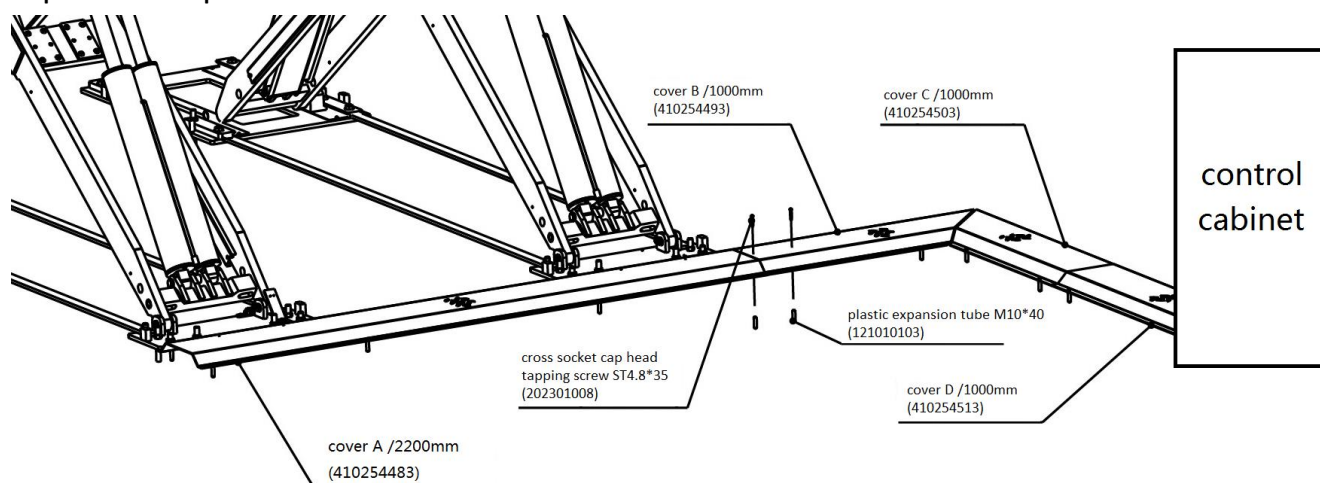
PUSH UP BUTTON TO CHECK.

THE "wheel free jack" SHOULD BE SYNCHRONIZED BY THIS STEP.

Repeat the above levelling steps until synchronization reached.

Step 7: Fix base frames with expansion bolts.

- ① Before anchoring, it is necessary to check again the position for each base plates by referring to the dimension scheme as well as the corresponding installation requirements.
- ② Drill holes using D16 carbide tipped masonry drill bit. Make sure to drill vertically down.
- ③ Clean the hole and check again the position of the posts to ensure they are correctly positioned.
- ④ Use a spirit level to check the vertical alignment of the two adjacent base plates. If necessary, place equalizing plates under the base plates. The equalizing plates must be of the same length as the side of the base plate resting on them. Otherwise the load of the base plate will not be transferred evenly to the foundation.
- ⑤ Impact and drive anchoring bolt into hole until nut and washer contact base.
- ⑥ Tighten the nut with torque wrench to 80Nm.

Step 8: Fix oil hose protection covers.

4.4 Items to be checked after installation.

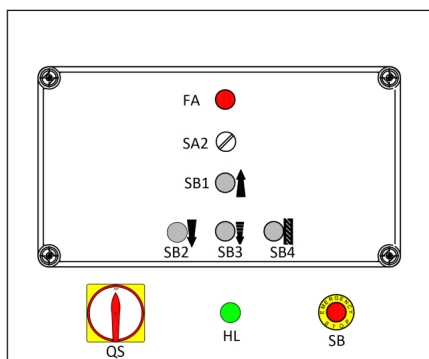
S/N	Check items	YES	NO
1	Screw torque of expansion bolts : 60-80Nm;		
2	Rising speed ≥ 20 mm/s;		
3	Noise with rated load ≤ 75 dB(A);		
4	Grounding resistance: not bigger than 4Ω ;		
5	Height difference of the two platform ≤ 5 mm;		
6	Mechanical locks are robust and synchronized when running with rated load ;		
7	If the control button works as "hold to run"?		
8	If limit switches work well?		
9	If grounding wire is connected?		
10	If the lift rises and lowers smoothly?		
11	If there is no abnormal notice during running with rated load?		
12	If there is no oil leakage when running with rated load?		
13	If there is no air leakage when running with rated load?		
14	If expansion bolts, nuts or circlips are well secured?		
15	If max lifting height is reached?		
16	If Safety advices, name plate and logos are clear?		

OPERATION INSTRUCTIONS

5.1 Precautions

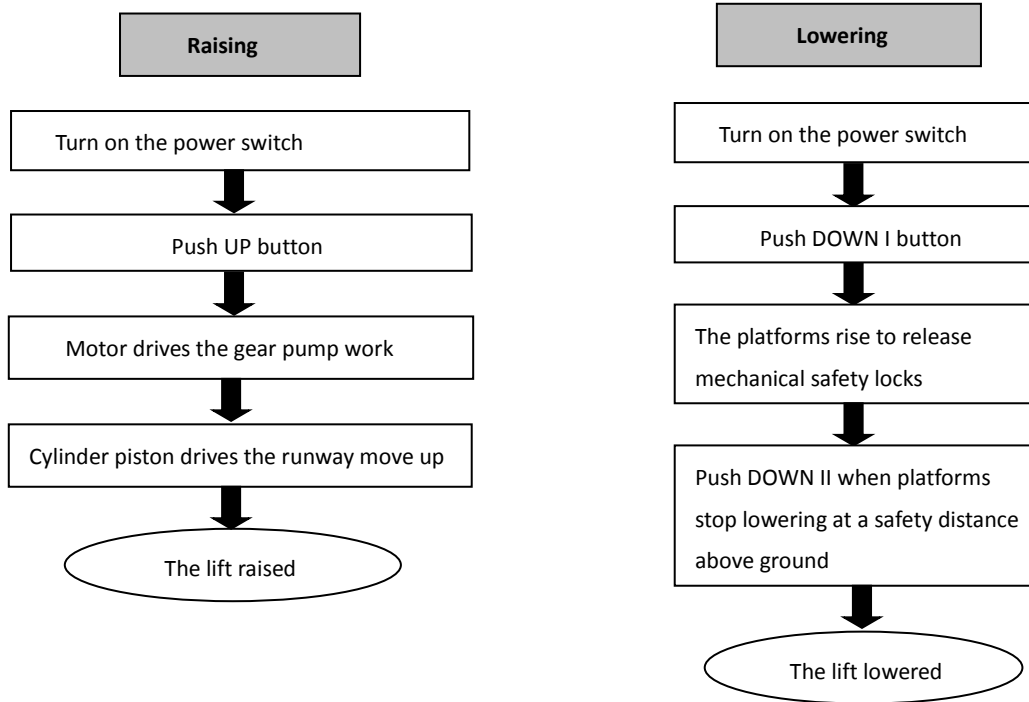
- 5.1.1. Read and digest the complete operation instructions before operating the lift.
- 5.1.2. Only authorized persons are permitted to operate the lift.
- 5.1.3. Do not try to raise the vehicle with excessive length or width.
- 5.1.4. The space above and below the load as well as of the loading carrying devices shall be free of obstructions.
- 5.1.5. Position supporting pads to pick-up positions recommended by vehicle manufacturers.
- 5.1.6. Check the vehicle after raising a short distance to ensure that it is corrected and safely positioned.
- 5.1.7. The load carrying device shall be observed by the operator throughout the motion of the lift.
- 5.1.8. Engage the safety locking mechanism before entering under the raised vehicle.
- 5.1.9. Avoid excessive rocking of vehicle while on the lift
- 5.1.10. It is forbidden for people to stand in the field of motion during raising or lowering movement.
- 5.1.11. Do not climb onto the load or load carrying device when they are raised.

5.2 Descriptions of control panel



POS.	Name	Function
FA	Alarm buzzer	Safety warning
SB1	UP button	Control the rising movement
SB4	LOCK button	Engage the safety locks
SB2	DOWN button	Control the initial lowering movement
SB3	DOWN button	Control the final lowering movement
SB	Emergency stop	Stop power in emergency cases
HL	Power indicator	Show if power is on
QS	Main switch	Power on /off
SA1	Selection switch	Select working or levelling mode
SA2	Selection switch	Select main lift or wheel free jack
SA3	Selection switch	Turn on or off the infrared protection device

5.3 Working flow chart



5.4 Operation instructions

The lift must be only used in a static position for lifting and lowering vehicles. Only use this lift on a surface that is stable and capable of sustaining the load.

To avoid personal injury and/or property damage, permit only trained personnel to operate the lift. After reviewing these instructions, get familiar with lift controls by running the lift through a few cycles before loading vehicle on lifting platform.

Always lift the vehicle using all four adapters. Never raise just one end, one corner or one side of vehicle.

The normal users are not allowed to open the door of control cabinet. Selection switches in the control cabinet need to be turned to 'working' and "infrared on" before using the lift to raise vehicles.

Using the main lift

Raise the lift

Make sure vehicle is neither front nor rear heavy and center of balance should be centered over the lift.

1. Drive and park the vehicle midway between two platforms. Make sure the vehicle is correctly positioned and secured against moving.
2. Turn the optional switch on the control panel to "Main Lift".
3. Push the "UP" button on the control panel to lift the vehicle a bit higher from the ground and check again if the vehicle is in a safe position.
4. Having raised the vehicle to the height expected, push the "Safety Lock" button to ensure the mechanical safety lock is engaged and check again the stability before performing maintenance or repair work.

Lower the lift

When lowering the lift pay careful attention that all personnel and objects are kept clear.

1. Push "DOWN I" button to lower the lift. Firstly, the lift will automatically rise to disengage the mechanical locks. Then the lift lowers. It will stop lowering when clearance between the platforms and the ground reaches to 600mm.
2. Push "DOWN II" button to continue lowering the platforms. Meanwhile the buzz alarms.

Using the wheel free jack. Lifting capacity: 4000kg***Raise the wheel free jack***

1. Turn the optional switch on the control panel to “wheel free jack”.
2. Place rubber pads under the pick-up points of vehicle. When it is necessary to use the platform extensions, push “UP” button to raise platforms of the wheel free jack a little bit over the platforms of main lift and pull out the extensions.
3. Push “UP” button and check again if the rubber pads are directly under the pick-up points of the vehicle when they are very close to the chassis.
4. Keep on pushing “UP” button until reaches to the expected height. Full rise is 450mm over the platform of main lift.

Lowering the wheel free jack

Attention: in case the platform extensions of the “wheel free jack” are used, the operator needs to retract both extensions when the four wheels of vehicle have enough contact with the main lifting platforms.

1. Turn the selection switch on the control panel to “wheel free jack”.
2. Push “DOWN I” button on the control panel for lowering.
3. Take away rubber pads.

Attention: In the case the lift runs unsynchronously with deviation of height exceeds 60 mm in lifting or lowering process, the synchronization protection device will be activated to stop any raising or lowering movement. In this case the normal operator need to ask professional help from maintenance operator to restore the lift to normal working condition.

Restore to the normal working status.

Open the door of the control cabinet;

Turn SA3 to OFF status;

PUSH DOWN I and DOWN II button to fully lower the platform;

Level until both platform are synchronized. (Refer to **Step 6: Levelling**)

Turn SA3 to ON status.

SA3: Control on or off for synchronization protection device.

TROUBLE SHOOTING

ATTENTION: If the trouble could not be fixed by yourself, do not hesitate to contact the distributor or manufacturer for help.

We will offer our service at the earliest time we can. Meanwhile the troubles will be judged and solved much faster if more details or pictures of the trouble are provided.

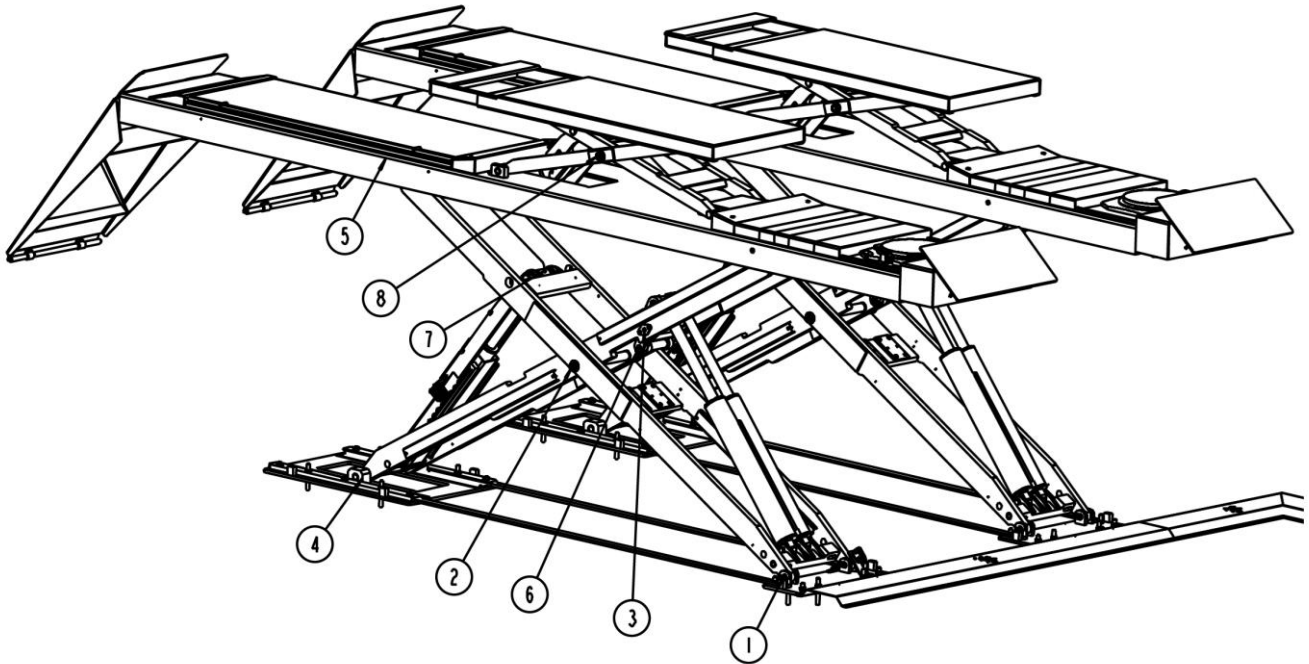
TROUBLES	POSSIBLE CAUSES	SOLUTIONS
Motor does not run and will not raise.	Loose wire connection	Check and make a good connection.
	Burnt motor.	Replace it.
	Damaged limit switch or its wire connection is loose.	Adjust or replace the limit switch.
Motor runs but will not raise.	The motor run reversely.	Check the wire connection.
	Overflow valve is not well screwed up or jammed.	Clean or make adjustment
	Damaged gear pump.	Replace it.
	Too low oil level.	Add oil.
	The hose connection is loose.	Tighten it.
	The cushion valve is not well screwed up or jammed.	Clean or make adjustment
Platforms go down slowly after being raised.	The oil hose leaks.	Check or replace it.
	Untightened oil cylinder.	Replace the seal.
	The single way valve leaks.	Clean or replace it.
	Solenoid valve fails to work well.	Clean or replace it.
	Unloading valve leaks.	Check and adjust the tightness.
Raising too slow.	Jammed oil filter	Clean or replace it.
	Too low oil level.	Add oil.
	The overflow valve is not adjusted to the right position.	Make adjustment.
	Too hot hydraulic oil (above 45°) .	Change the oil.
	Abraded seal of the cylinder	Replace the seal.
Lowering too slow.	Jammed throttle valve	Clean or replace it.
	Dirty hydraulic oil	Clean or replace it
	Jammed anti-surge valve	Change the oil.
	Jammed oil hose	Clean it.

MAINTENANCE

Easy and low cost routine maintenance can ensure the lift work normally and safely.

Follow the below routine maintenance schedule with reference to the actual working condition and frequency of your lift.

The following parts need to be lubricated with No.1 lithium base grease.



Maintenance list

S/N	Components	Methods	Period
1	Control buttons	Check if control buttons work as "hold- to -run " and check if they work as the function indicated.	Every day
2	Pneumatic filter	Listen and inspect the filter to ensure no leakage. Inspect and ensure the water level is below its max limit mark and the oil level is above the minimum limit mark.	Every day
3	Hydraulic block and valves	Inspect if the valves leak or not. Clean or change the valve if any leakage.	Every day
4	Oil hoses and connectors	Inspect to ensure no leakage before using the lift.	Every day
5	Pneumatic hoses and connectors	Inspect to ensure no leakage before using the lift.	Every day
6	Mechanical safety catch	Check if both mechanical catches can engage and disengage effectively and synchronously by pushing control buttons.	Every day
7	Padding plate for the start roller	Check its tightness and add grease.	Every 1 month
8	Terminals in the control unit	Open the control unit, inspect the wire terminals and screw firmly if any terminals become loose.	Every 3 months
9	Joint shafts	Add grease into the oil cups.	Every 3 months

S/N	Components	Methods	Period
10	Anchored expansion bolts	Check with torque spanner. Screw torque:60-80Nm	Every 3 months
11	Self-locking nut	Check with torque spanner. The torque should be no less than 330Nm.	Every 3 months
14	Fixation holder of the wheel free jack	Check with torque spanner. The torque should be no less than 55Nm.	Every 3 months
15	Lifting platform synchronization	Check the synchronization of both lifting platforms. Ensure both platforms ascend and descend synchronously.	Every day
16	Hydraulic oil	Change the oil 6 months after initial use and once per year thereafter. Inspect the hydraulic oil and change the oil if the oil becomes black or there is dirt in the oil tank.	Every year
17	Whole Lift	Run the lift for several cycles with and without rated load. The lift can run steadily and smoothly with no abnormal noise. Check the synchronization of both lifting platforms. Ensure both platforms ascend and descend synchronously.	Every 3 months

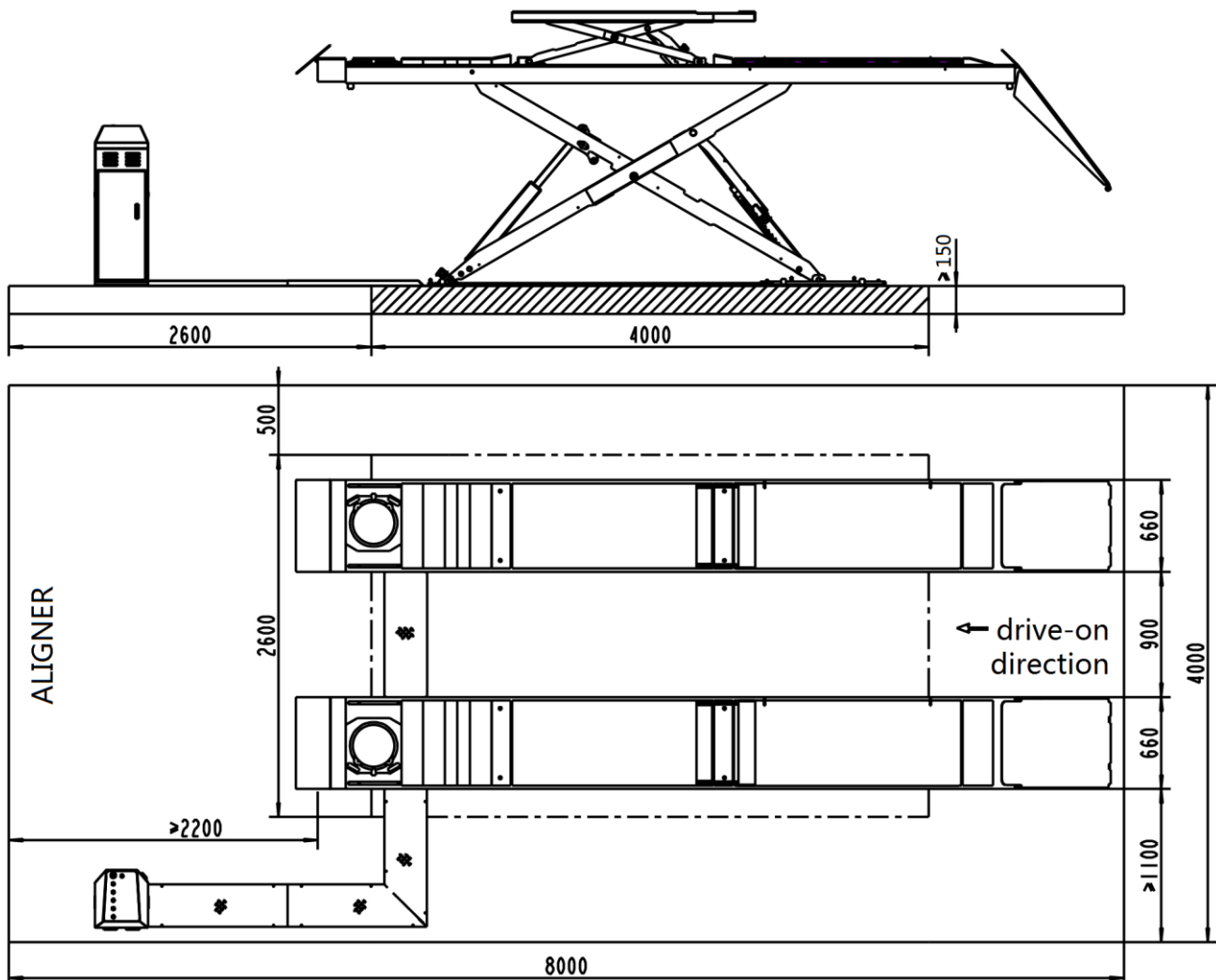
If users stick to the above maintenance requirements, the lift will always keep a good working condition and its service life could be extended.

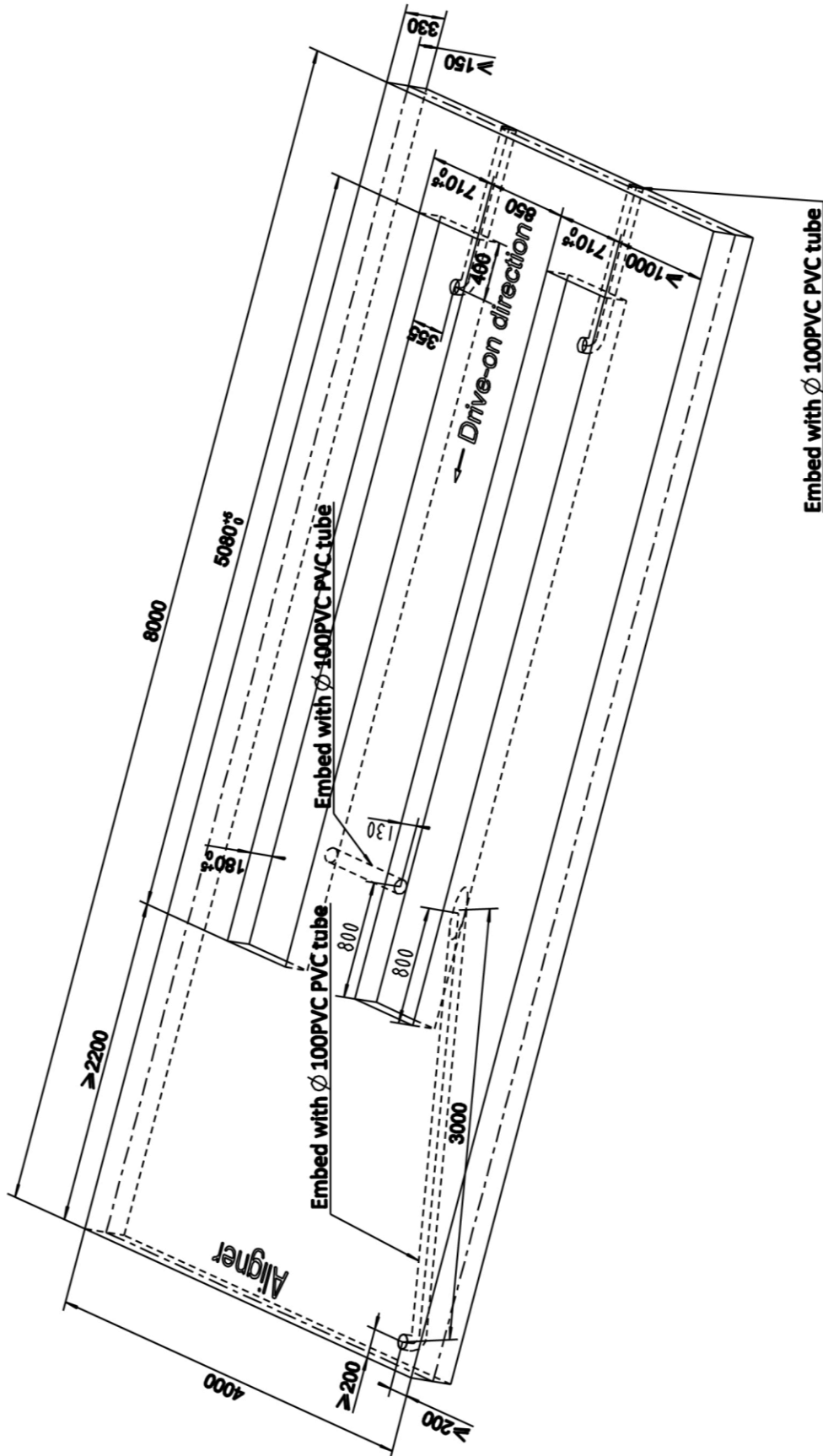
Annex 1, Floor Plan

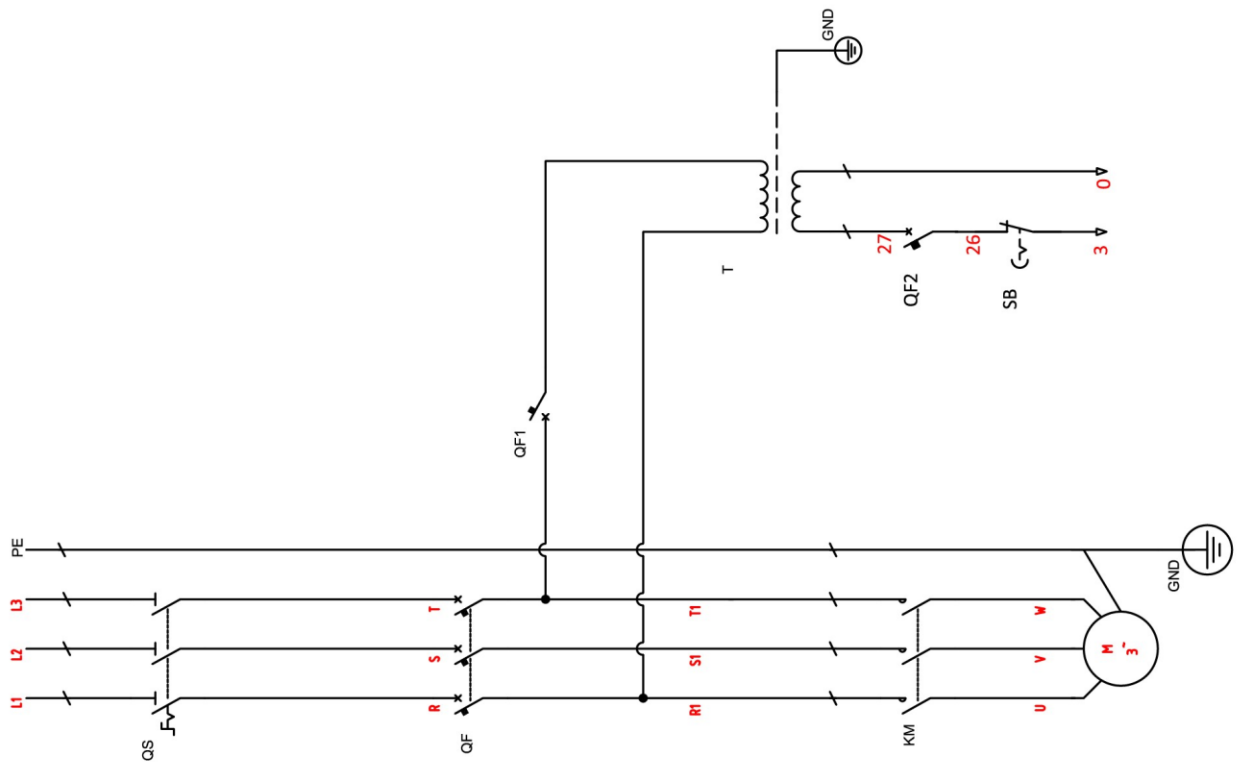
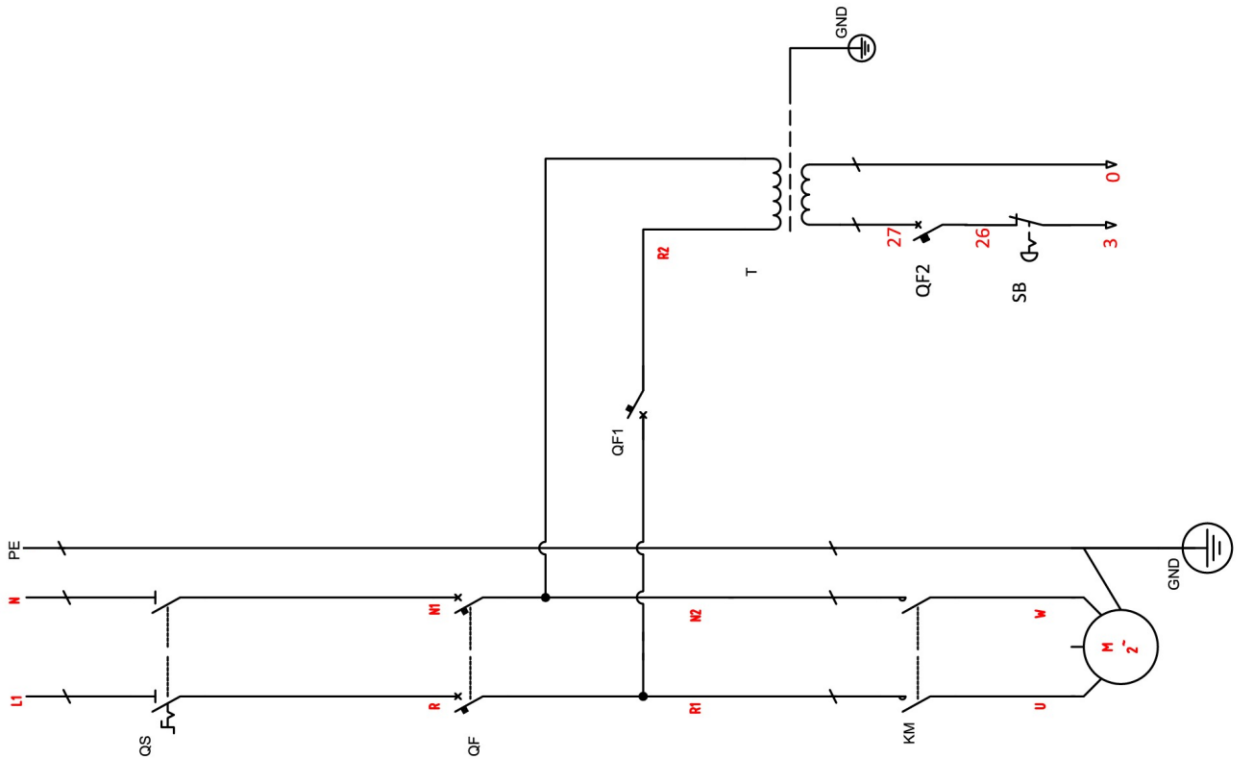
Requirements:

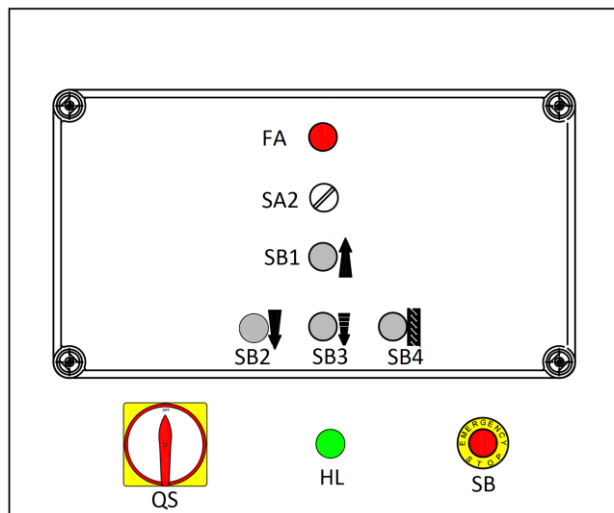
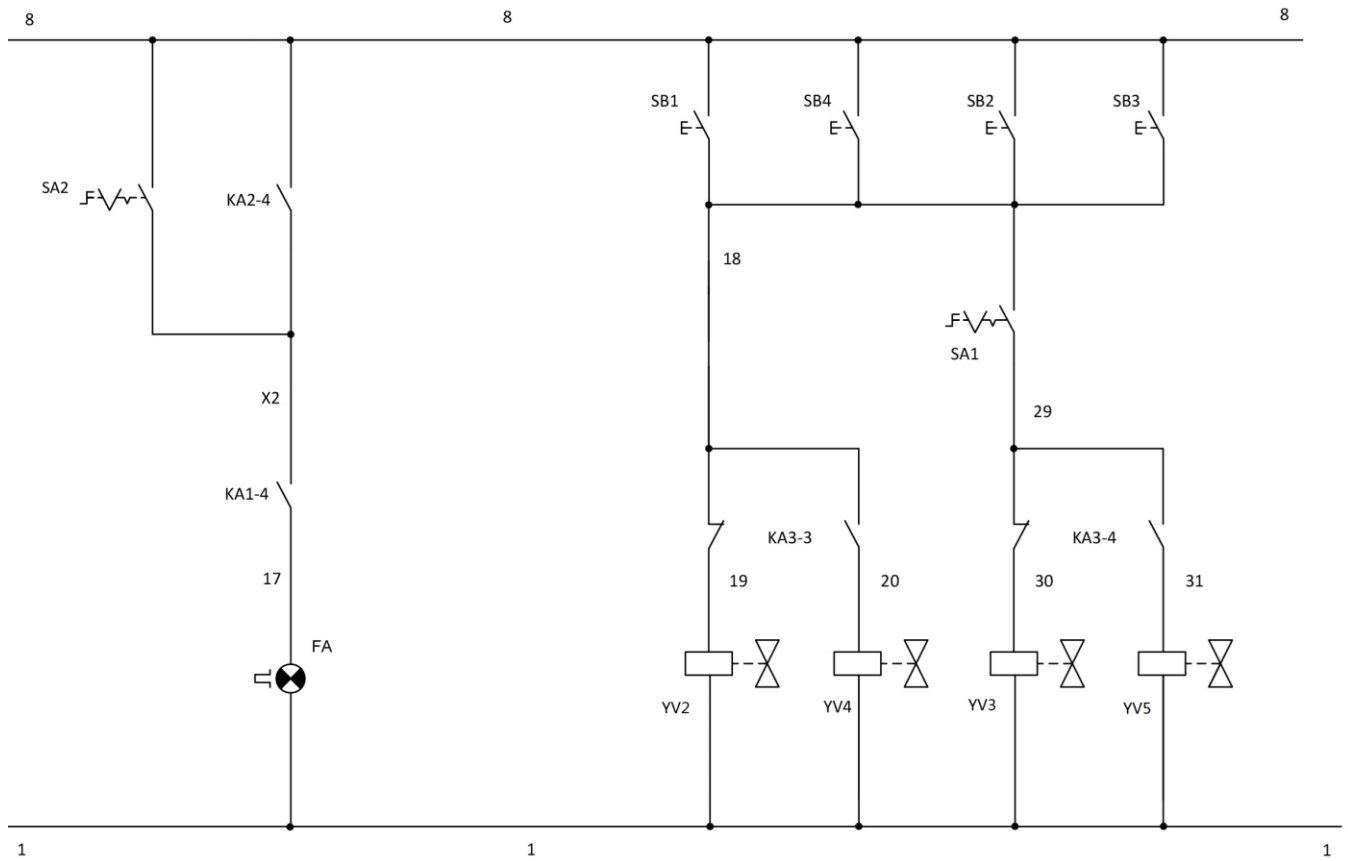
- ① **Indoor installation only.** There must be a clearance of at least 1 meter between the lifting platform and fixed elements (e.g. wall) in all lifting positions. There must also be sufficient space for driving vehicles on and off.
- ② C25 concrete foundation with a minimum thickness of 150mm. Concrete Surface under the base plates: Horizontal and even (Gradients max. 0.5 %).
- ③ Embedded L40 angle iron around the pit for edging. (For recessed mounting)
- ④ Newly built concrete ground must be older than 20days.
- ⑤ In case drain pipes are not available, it is necessary to reserve a water collection pit. (ONLY APPLICABLE TO RECESSED INSTALLATION)
- ⑥ All dimensions are in millimeters.

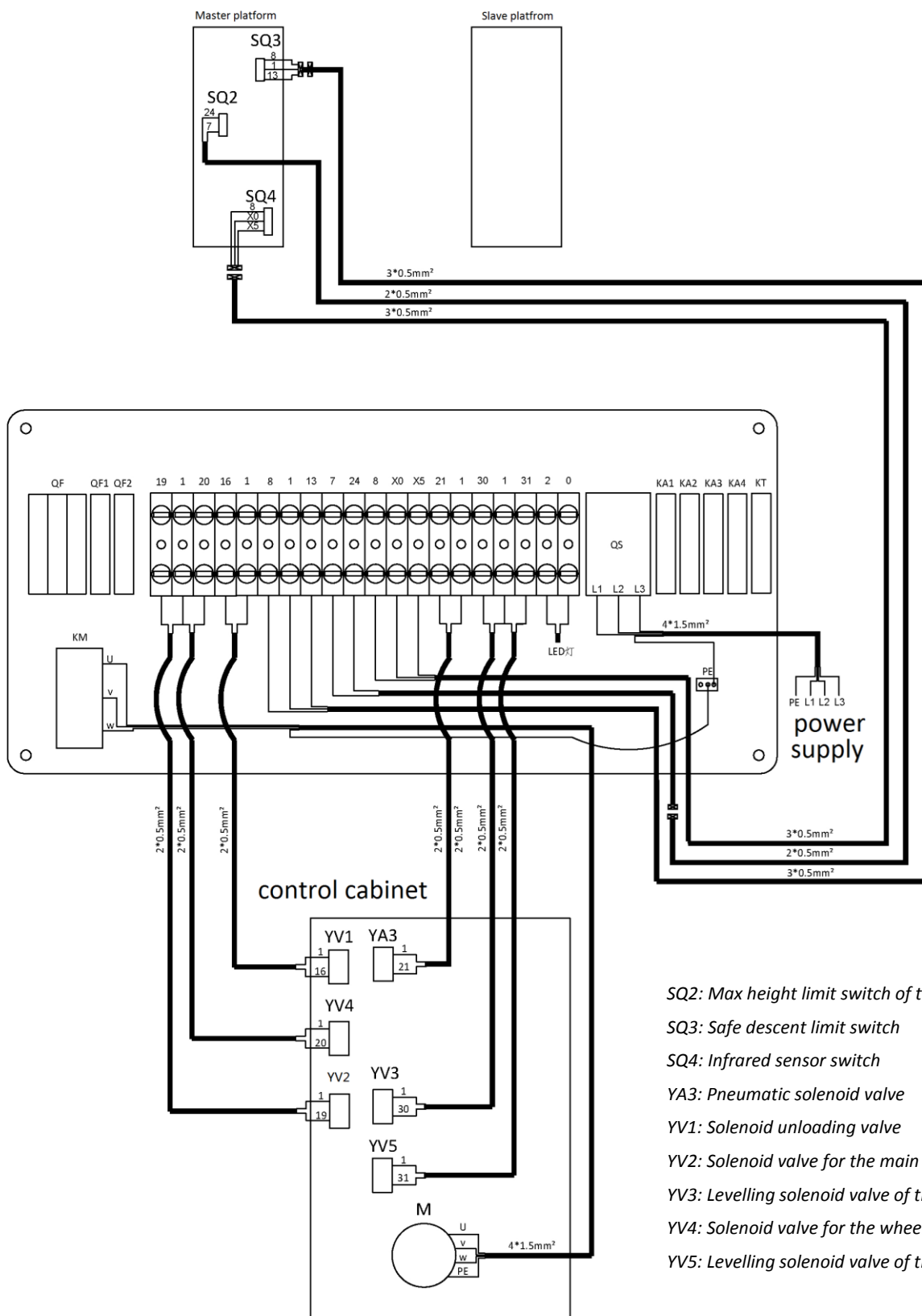
Floor Plan for Surface Mounting



Floor Plan for Recessed Mounting


Annex 2, Electrical schemes and parts list


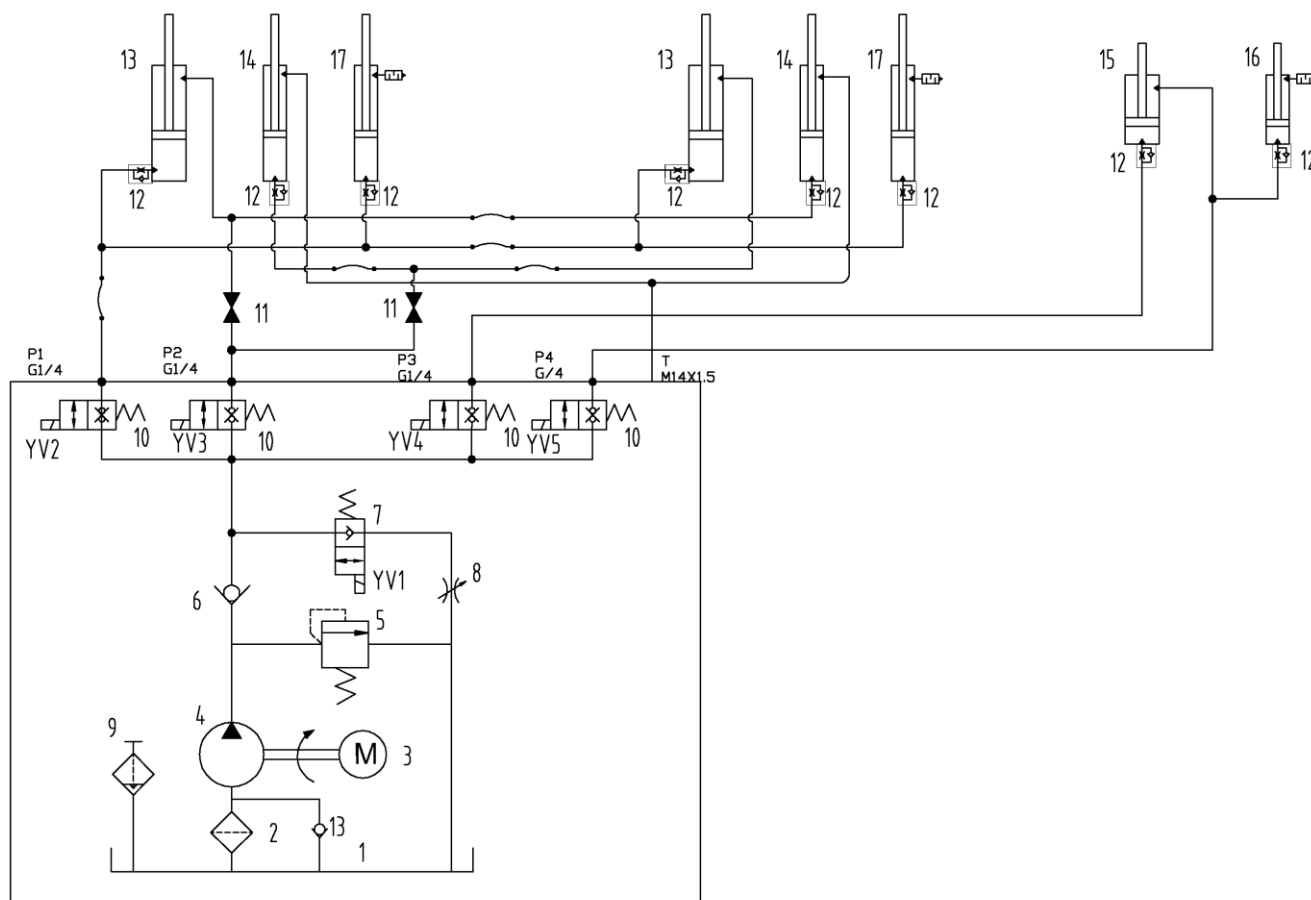




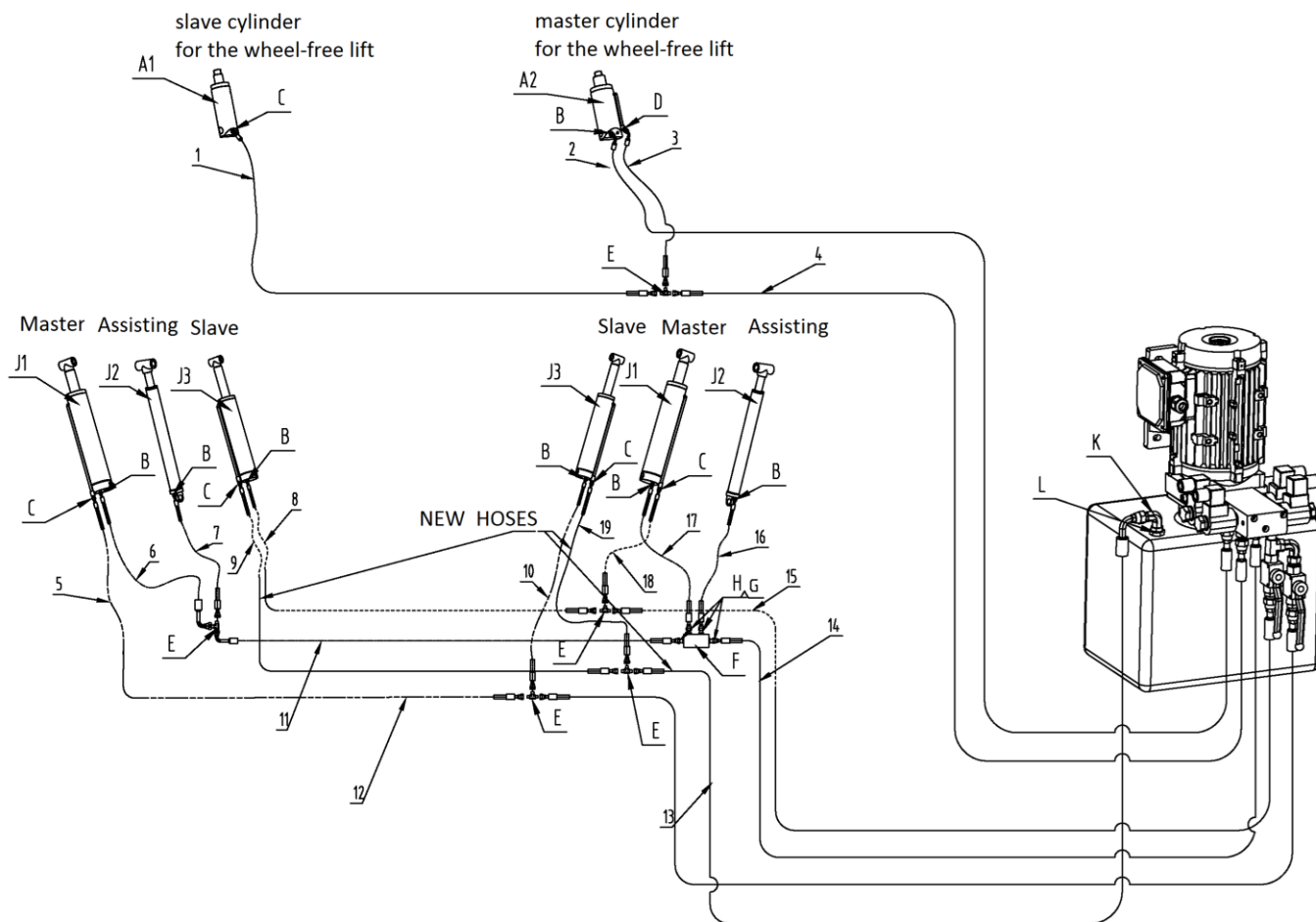
- SQ2: Max height limit switch of the wheel-free lift*
- SQ3: Safe descent limit switch*
- SQ4: Infrared sensor switch*
- YA3: Pneumatic solenoid valve*
- YV1: Solenoid unloading valve*
- YV2: Solenoid valve for the main lift*
- YV3: Levelling solenoid valve of the main lift*
- YV4: Solenoid valve for the wheel-free lift*
- YV5: Levelling solenoid valve of the wheel-free lift*

POS.	Code	Description	Qty
T	320101128	Transformer (380V/400V/415V)	1
M		Motor	1
SQ1	320301003	Limit switch (no this switch for version with auto-bleeding cylinders)	1
SQ2	320301011	Limit switch	1
SQ3	320302002	Proximity switch	1
SQ4	320306025	Infrared sensor switch	1
SA1	320303018	Selection switch	1
SA2	320303020	Selection switch	1
SA3	320303019	Selection switch	1
QS	320304001	Power switch	1
SB3,SB4	320401038	Button	2
SB1,SB2	320401044	Button	2
SB	320402002	Emergency stop	1
	320503002	Ground terminals	1
	320505006	Wire terminal	21
	320505011	Retaining chip	2
KA2;KA3;KA4	320601001	Relay	3
KA1	320601002	Relay	1
	320601011	Relay holder	4
	320601018	Relay feet fixer	8
KT	320602009	Integrated time relay	1
QF	320801001	Circuit breaker (3.5kW-3Ph)	1
QF1	320803001	Circuit breaker	1
QF2	320803005	Circuit breaker	1
KM	320901011	AC contactor (3.5kW-3Ph/dual)	1
C	321001004	Capacitor	1
VD	321002001	Bridge rectifier	1
HL	321201001	Power indicator	1
FA	321202001	Alarm buzzer	1

**NOTE: The transformer is different for various voltages of power supply.
Please check with our customers service people when order spare parts.**

Annex 3, Hydraulic schemes and parts list


1. oil tank 2. oil sucking filter 3. motor 4. gear pump 5. relief valve
 6. non-return valve 7. solenoid valve 8. restrictive valve 9. Lid of the tank 10. 2-position 3-way solenoid valve
 11. 2-way ball valve 12. Cylinder connector 13. Slave cylinder of the main lift 14. Master cylinder of the main lift
 15. Master cylinder of the wheel-free lift 16. Slave cylinder of the wheel-free lift 17. Assisting cylinder of the main lift

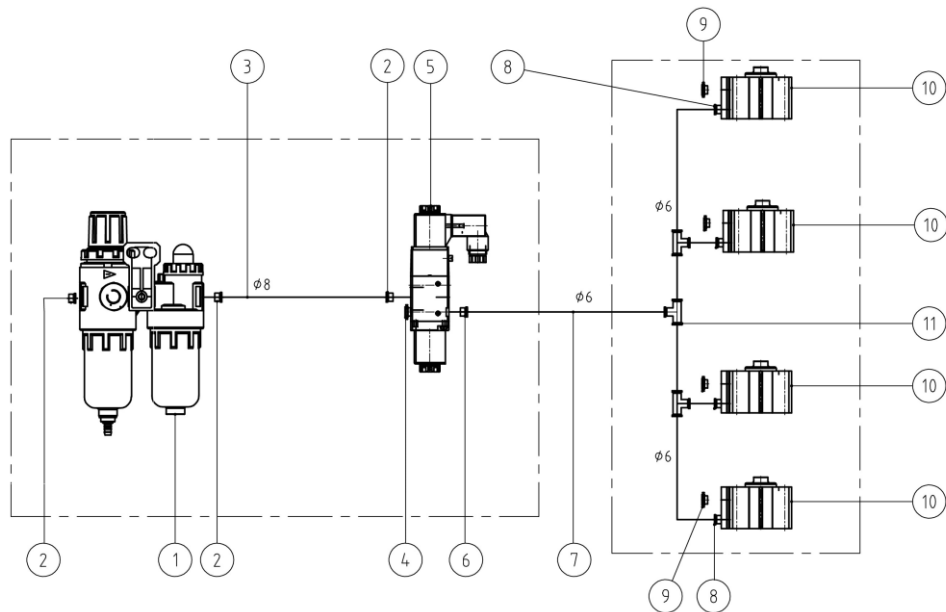


Pos.	Code	Description	Specification	Qty
A1	615025014	Slave cylinder	6604B-A12-B1	1
A2	615025012	Master cylinder	6604B-A11-B1	1
B	615019006	Straight restrictive valve	6501-A4-B15	7
C	615019005	Tube connector B	6501-A4-B16	5
D	410210011	Right-angle connector	6603B-A9-B4	1
E	410210181	3-way connector	6603B-A9-B7	5
F	410250271	4-way connector	6604B-A29	1
G	207103025	Composite washer	13_7X20X1_5	4
H	310101010	Straight connector	G1/4---G1/4	4
J1	625000011	Master cylinder	YG90/102-50-625	2
J2	625000025	Assisting cylinder	YG75-85-45-595	2
J3	625000012	Slave cylinder	YG75/85-45-625	2
K	310102035	Adjustable right-angle connector	EW-G1/4SR-G1/4 I60	1
L	310101079	Transfer connector	M20*2-G1/4	1
1	624001817	RIAT oil hose	L=6650mm	1
2	624001820	RIAT oil hose	L=9200mm	1
3	624001818	RIAT oil hose	L=5400mm	1

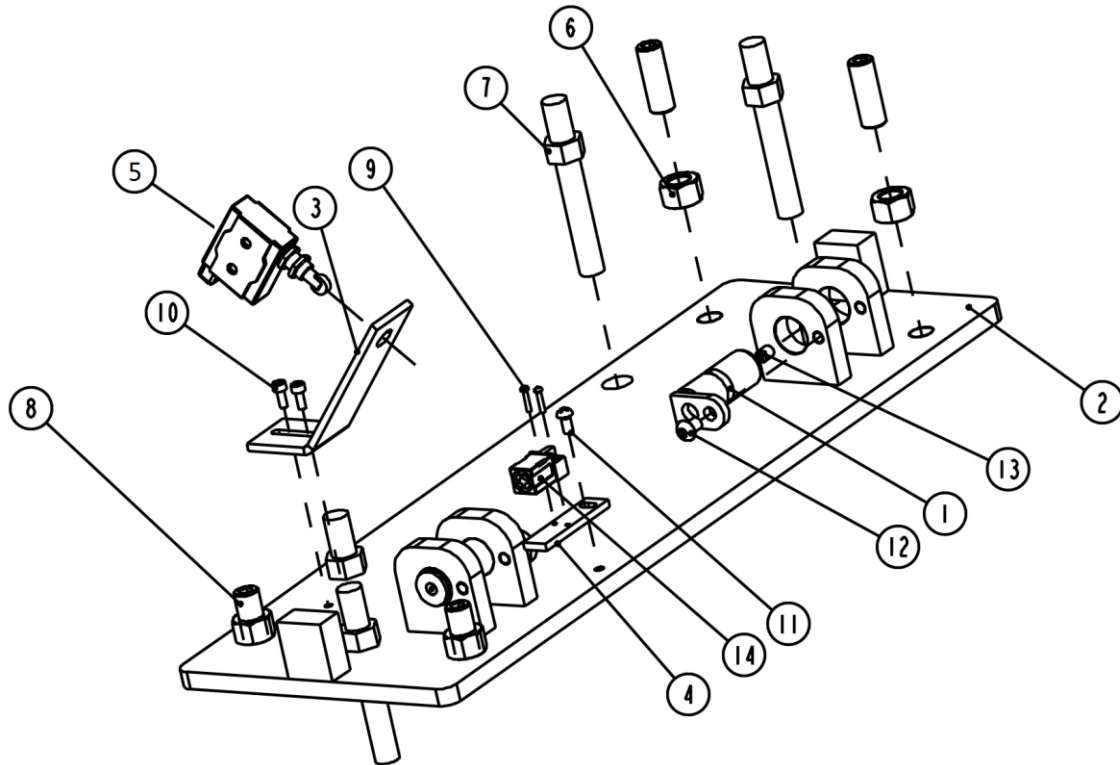
Pos.	Code	Description	Specification	Qty
4	624001819	RIAT oil hose	L=4270mm	1
5	624001281	Oil hose	L=2250mm	1
6	624002105	Oil hose	L=530mm	1
7	624001260	Oil hose	L=3800mm	1
8	624001281	Oil hose	L=2250mm	1
9	624008216	Oil hose	L=2200mm	1
10	624001845	Oil hose	L=570mm	1
11	624001815	Oil hose	L=1700mm	1
12	624001248	Oil hose	L=3700mm	1
13	624008217	Oil hose	L=4100mm	1
14	624001248	Oil hose	L=3700mm	1
15	624001248	Oil hose	L=3700mm	1
16	624001260	Oil hose	L=3800mm	1
17	624001045	Oil hose	L=530mm	1
18	624001846	Oil hose	L=600mm	1
19	624008208	Oil hose	L=550mm	1

SEAL RINGS

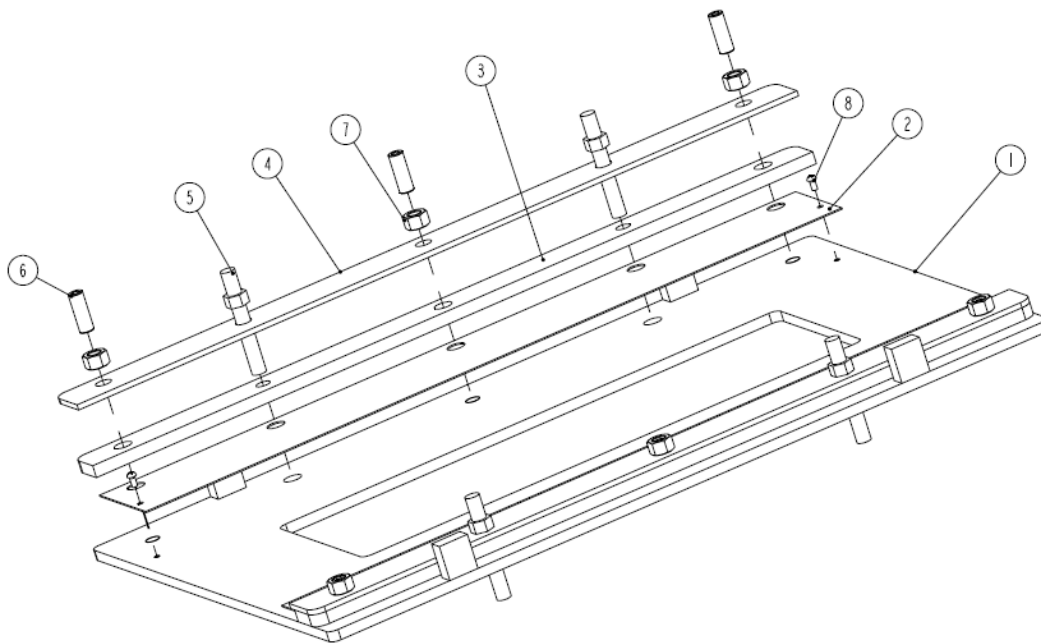
Cylinder code	Cylinder name	Seal ring code	Descriptions	Specification	Qty
625000011	Master cylinder of the main lift	207101159	Piston seal ring	90*74.5*6.3	1
		207106108	Support ring	85*90*9.7	2
		207101169	O ring	82.5*3.55	1
		207107038	Stop ring	85.6*91*1.25	1
		207107039	Seal ring	50*60*7	1
		207106089	Support ring	50*55*9.7	2
		207105046	Dust-proof ring	50*58*6	1
625000012	Slave cylinder of the main lift	207101163	Piston seal ring	75*59.5*6.3	1
		207106109	Support ring	70*75*9.7	2
		207101170	O ring JISB2401	69.4*3.1	1
		207107031	Seal ring	45*55*7	1
		207106102	Support ring	45*50*9.7	2
		207105042	Dust-proof ring	DH45*53*6	1
625000025	Assisting cylinder of the main lift	207104010	Type U seal ring	75*67*6.3	1
		207107040	Stop ring	67*75*2	1
		207106109	Support ring	70*75*9.7	1
		207105050	Dirt collecting ring	75*67*6.2	1
		207101170	O ring JISB2401	69.4*3.1	1
		207106102	Support ring	45*50*9.7	2
		207105042	dust-proof ring	DH45*53*6	1
615025012	Master cylinder of the wheel-free lift	207103033	Type Y seal ring	B7-100*85*9	2
		207103023	Type Y seal ring	BS60*70*6	2
		207105009	Dust-proof seal ring	DHS60 (60*68*6)	1
615025014	Slave cylinder of the wheel-free lift	207102008	Type Y seal ring	B7-80*65*9	1
		207105008	Dust-proof seal ring	DHS45 (45*53*6)	1

Annex 4, Pneumatic scheme and parts list


POS.	Code	Description	Specification	Qty
1	321004006	AFC Air filter combination	AFC2000	1
2	310102015	Quick bending air hose connector	KLL8-02	3
3	123010101	Air hose	D=6	1
4	310201002	Silencer	SLM02 R1/4 (M12)	1
5	310401001	Pneumatic solenoid valve	3V210-08DC24V	1
6	310101015	Quick straight air hose connector	KLC8-02	1
7	123010101	Air hose	D=6 200	1
8	310101024	Quick straight air hose connector	KLC6-01	4
9	310201003	Silencer	SLM01 R1/8 (M8)	4
10	310501005	Pneumatic cylinder	CQ2B32*30	4
11	310103005	Quick three-way air hose connector	KLE-6	3

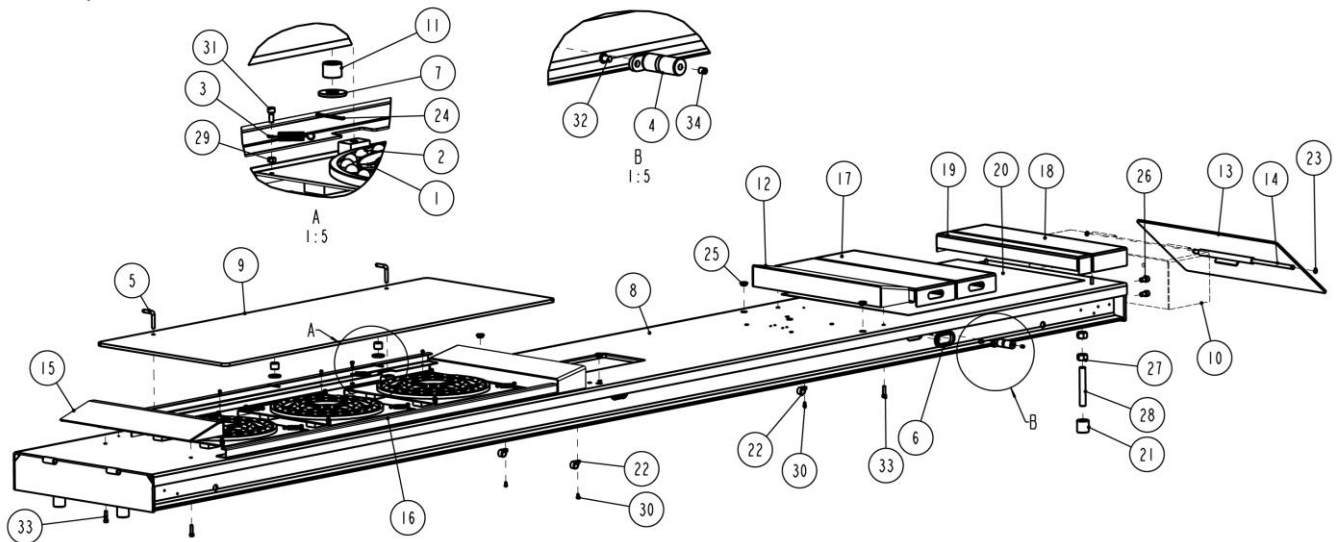
Annex 5, Mechanically exploded drawings and parts list


POS.	Code	Description	Specification	Qty
1	612019504	Shaft of the support holder	65012-A1-B5	2
2	614025056	Base A	6604V2-A1-B1	1
3	410254273	Bracket for limit switch (no this part for version with auto-bleeding cylinders)	6604V2-A1-B2	1
4	410250013	Plate for down limit switch	6604V2-A1-B3	1
5	320301003	Limit switch (no this part for version with auto-bleeding cylinders))	D4MC-5020	1
6	203101009	Hex nut M16	M16-GB6170	4
7	201201005	Expansion bolt	M16X120	4
8	202205002	Hex socket flat head tapping screw	M16X50-GB77	4
9	202101002	Cross socket cap head screw	M3X15-GB818	2
10	202109027	Hex socket cylinder head screw (no this part for version with auto-bleeding cylinders))	M8X12_GB70_1	2
11	202109027	Hex socket cylinder head screw	M8X12_GB70_1	1
12	202110004	Hex socket cap head screw	M8X12_GB70_2	2
13	208106002	Pressed oil cup M8	M8YP_GB7940_4	2
14	320302002	Proximity switch	PL-05P	1



POS.	Code	Description	Specification	Qty
1	614025058	Large base frame	6604V2-A2-B1	1
2	410253550	Pad plate for slider	6604V2-A2-B2	2
3	410253683B	Pressure plate for Base B	6604V2-A2-B3	2
4	410255153	Anti-roll plate for Base B	6604V2-A2-B4	2
5	201201005	Expansion bolt	M16X120	4
6	202205002	Hex socket flat head tapping screw	M16X50-GB77	6
7	203101009	Hex nut	M16_GB6170	6
8	202101029	Cross socket cap head screw	M6X12-GB818	4

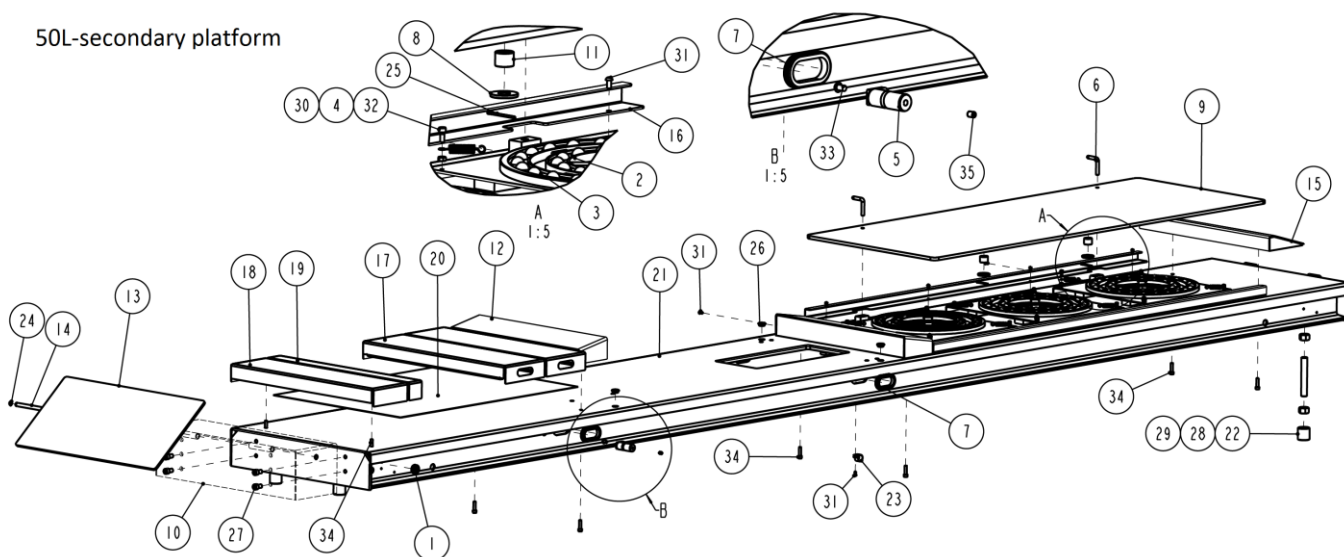
50L-main platform



POS.	Code	Description	Specification	Qty
1	420270100B	Ball holder	6435B-A4-B20	3
2	420270110	Ball	6435B-A4-B21	120
3	410274481	Pull spring	6435B-A4-B31	12
4	612019504	Shaft	65012-A1-B5	2
5	410250221B	Bolt	6604B-A16	2
6	420250050B	Protective sheath	6604B-A17	4
7	410250011	Washer	6604B-A1-B5	2
8	614025061C	Main platform	6604V2-A4-B1	1
9	614025062B	Slip plate	6604V2-A4-B2	1
10	614025063	Box	6604V2-A4-B3	1
11	420250010	Nylon sheath	6604V2-A4-B5	2
12	614025071	Mid ramp	6604V2-A4-B7	2
13	614025066B	Small ramp	6604V2-A4-B10	1
14	410250211	Ramp shaft	6604V2-A4-B12	1
15	614025067B	Slope plate	6604V2-A4-B13	1
16	410901756	Decorative plate	6604V2-A4-B20	2
17	410902033	Box (200mm)	6604V2-A4-B21	2
18	614901380	Fixed Box (175mm)	6604V2-A4-B22	1
19	614901381	Box (70mm)	6604V2-A4-B23	1
20	420680084	Magnetic rubber pad	6604V2-A4-B24	1
21	420260010	Adjustable nylon slider	6605B-A1-B8	4
22	208101036	Clip	D20	3

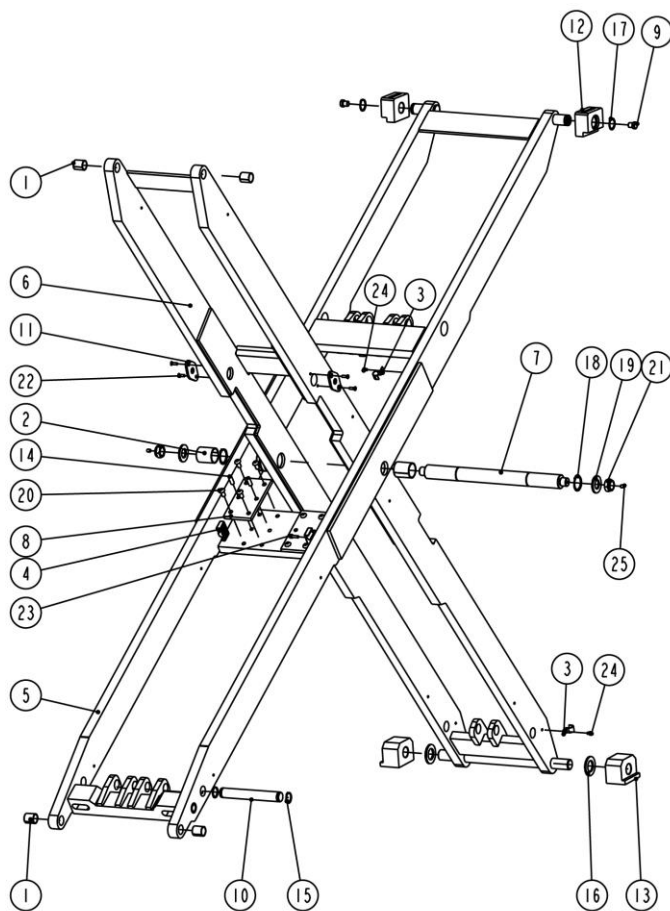
POS.	Code	Description	Specification	Qty
23	204301002	Circlip	D12-GB894_1	2
24	206201004	Cotter pin	D3X45-GB91	2
25	420680068	Rubber pad	DC-20	4
26	202109050	Hex socket cylinder head screw	M12X20-GB70_1	4
27	203101012	Hex nut	M20-GB6170	8
28	202205005	Hex socket flat head tightening screw	M20X140-GB77	4
29	203101004	Hex nut	M6-GB6170	12
30	202110003	Hex socket button head screw	M6X12-GB70_2	13
31	202109020	Hex nut M6	M6X15-GB70_1	12
32	202110004	Hex socket button head screw	M8X12-GB70_2	2
33	202109031	Hex socket cylinder head screw	M8X30-GB70_1	8
34	208106002	Pressed oil cup M8	M8YP-JB9740_4	2

50L-secondary platform



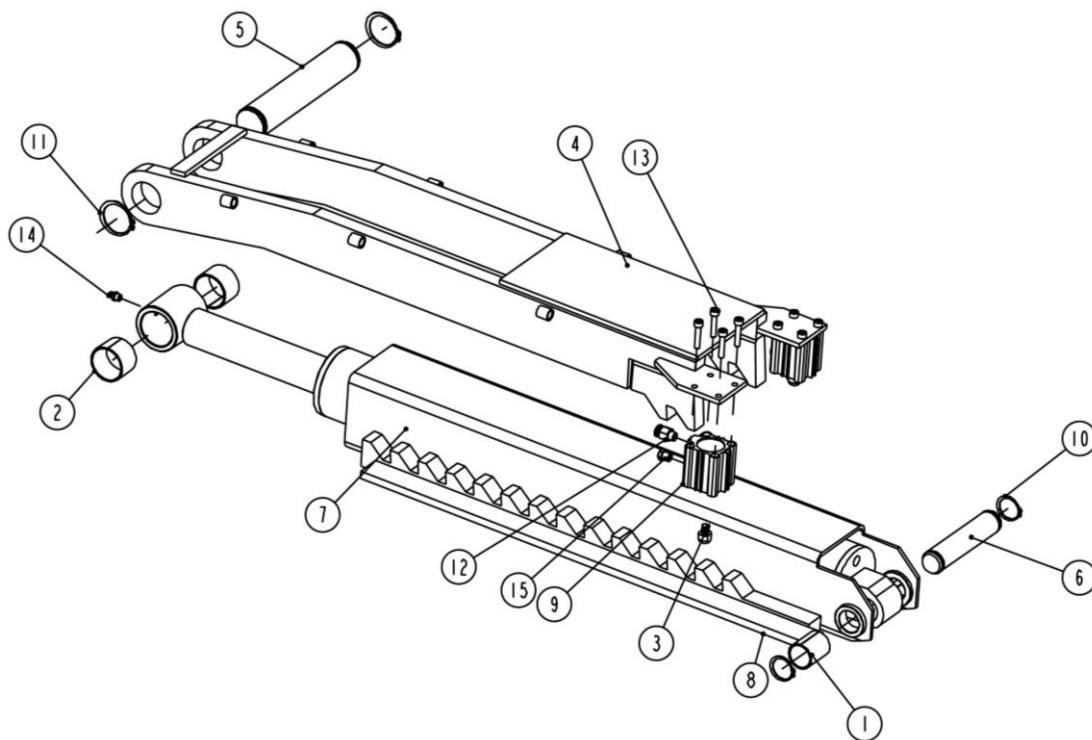
POS.	Code	Description	Specification	Qty
1	420040020	Protective ring D20	6254E-A22	1
2	420270100B	Ball holder	6435B-A4-B20	3
3	420270110	Ball	6435B-A4-B21	120
4	410274481	Pull spring	6435B-A4-B31	12
5	612019504	Shaft	65012-A1-B5	2
6	410250221B	Bolt	6604B-A16	2
7	420250050B	Protective sheath	6604B-A17	2
8	410250011	Washer	6604B-A1-B5	2
9	614025062B	Slip plate	6604V2-A4-B2	1
10	614025063	Box	6604V2-A4-B3	1
11	420250010	Nylon sheath	6604V2-A4-B5	2
12	614025071	Mid ramp	6604V2-A4-B7	2
13	614025066B	Small ramp	6604V2-A4-B10	1
14	410250211	Ramp shaft	6604V2-A4-B12	1
15	614025067B	Slope plate	6604V2-A4-B13	1
16	410901756	Decorative plate	6604V2-A4-B20	2
17	410902033	Box (200mm)	6604V2-A4-B21	2
18	614901380	Fixed Box (175mm)	6604V2-A4-B22	1
19	614901381	Box (70mm)	6604V2-A4-B23	1
20	420680084	Magnetic rubber pad	6604V2-A4-B24	1
21	614025308B	Secondary platform	6604V2-A4B-B1	1
22	420260010	Adjustable nylon slider	6605B-A1-B8	4
23	208101036	Clip	D20	1

POS.	Code	Description	Specification	Qty
24	204301002	Circlip	D12-GB894_1	2
25	206201004	Cotter pin	D3X45-GB91	2
26	420680068	Rubber pad	DC-20	4
27	202109050	Hex socket cylinder head screw	M12X20-GB70_1	4
28	203101012	Hex nut	M20-GB6170	8
29	202205005	Hex socket flat head tightening screw	M20X140-GB77	4
30	203101004	Hex nut	M6-GB6170	12
31	202110003	Hex socket button head screw	M6X12-GB70_2	11
32	202109020	Hex nut M6	M6X15-GB70_1	12
33	202110004	Hex socket button head screw	M8X12-GB70_2	2
34	202109031	Hex socket cylinder head screw	M8X30-GB70_1	8
35	208106002	Pressed oil cup M8	M8YP-JB9740_4	2

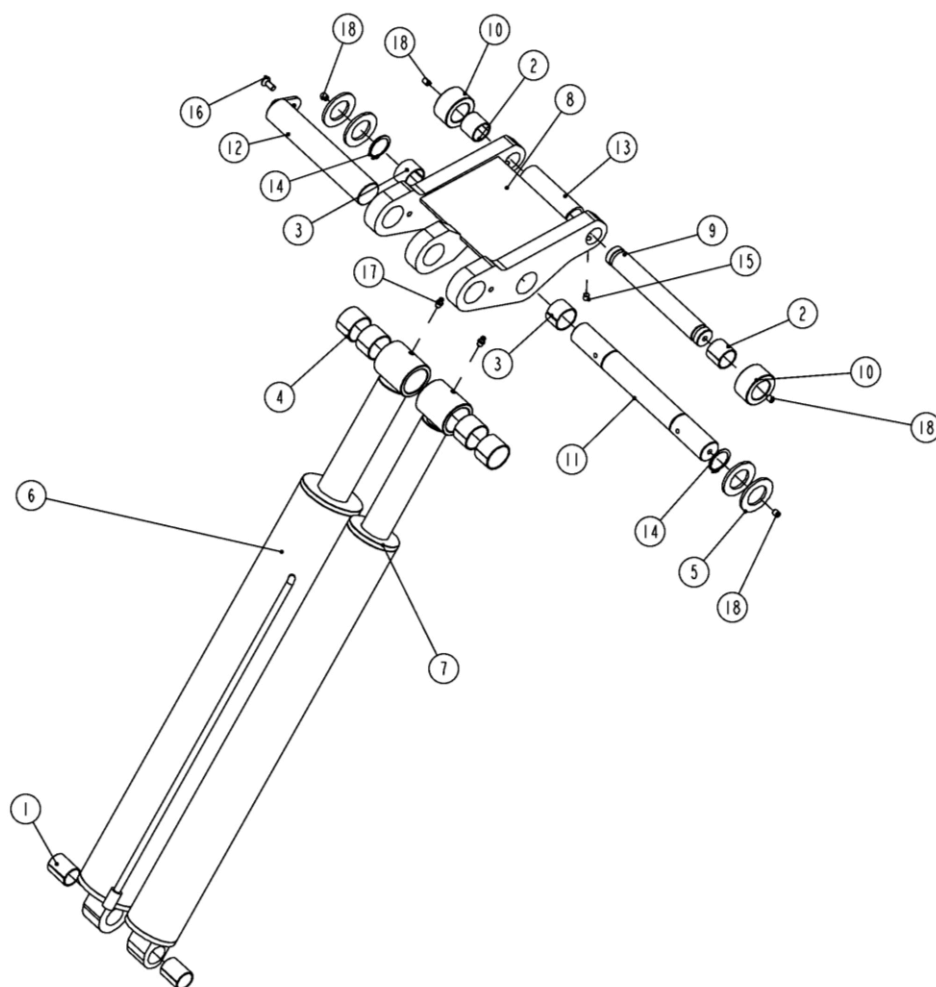


POS.	Code	Description	Specification	Qty
1	205101052	Bearing	2530_SF-2X	4
2	205101060	Bearing	4050_SF-2X	2
3	208101036	Oil hose clip	D21.5	2

POS.	Code	Description	Specification	Qty
4	420270070	Oil hose protective sheath	6435B-A3-B27	2
5	614025059B	Outside support arm	6604V2-A3-B1	1
6	614025060	Inside support arm	6604V2-A3-B2	1
7	410252281	Mid shaft of support bracket	6604V2-A3-B3	1
8	410250061	Rotor wheel pad	6604V2-A3-B4	2
9	420210060B	Padding block	6603B-A5-B6	2
10	410252321	DOWN cylinder shaft	6604V2-A3-B6	1
11	410251751	Shaft retaining block	6604V2-A3-B7	2
12	420260020B	Platform slider	6605B-A6-B1-C2	2
13	420260030B	Base slider	6605B-A6-B2-C2	2
14	206101008	Post pin	D10X30_GB119	4
15	204301010	Circlip	D28-GB894_1	2
16	204101015	Flat washer D30	D30-GB95	2
17	204301011	Circlip	D30-GB894_1	2
18	204301014	Circlip	D40-GB894_1	2
19	204101014	Flat washer C	M27	2
20	202110007	Hex socket button head screw	M10X20_GB70_2	8
21	203103018	Hex locking nut	M24ZS	2
22	202103012	Cross socket flat head screw	M6X16-GB819	4
23	202109020	Hex socket cylinder head screw	M6X15-GB70	2
24	202101027	Cross socket cap head screw	M6X8-GB818	2
25	208106002	Pressed oil cup M8	M8YP_GB7940_4	2

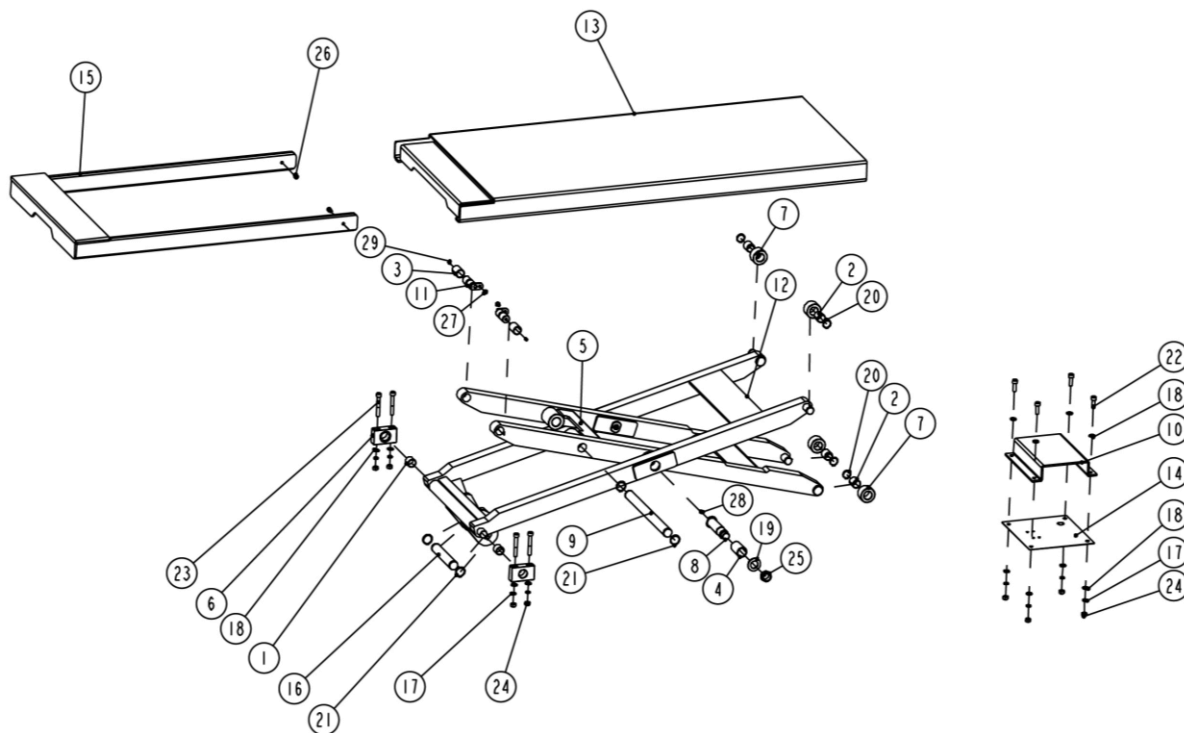


POS.	Code	Description	Specification	Qty
1	205101015	Bearing	2840_SF-2X	1
2	205101034	Bearing	4030_SF-2X	2
3	420210020	Hex socket button head screw	6603B-A3-B9	2
4	614025069B	Mechanical lock	6604V2-A5-B3	1
5	410252381B	Shaft	6604V2-A5-B4	1
6	410252391B	Shaft	6604V2-A5-B5	1
7	625000025	Assisting cylinder	YG75-85-45-595	1
8	614025070	Oil cylinder sheath	6604V2-A5B-B2	1
9	310501005	Air cylinder	CQ2B32-30D	2
10	204301012	Circlip	D28_GB894_1	2
11	204301014	Circlip	D40-GB894_1	2
12	310101024	Pneumatic straight connector	KCL6-01	2
13	202101033	Cross socket cap head screw	M6*20	8
14	208106001	Oil cup	M8YB_GB9740_1	1
15	310201003	Silencer	PSV1_8	2



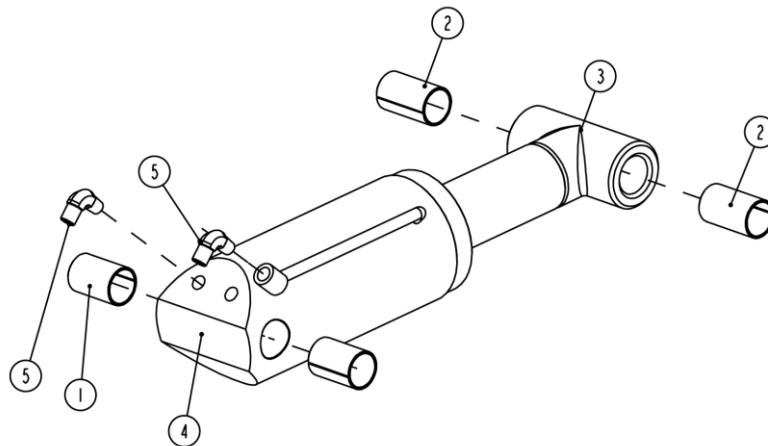
POS.	Code	Description	Specification	Qty
1	205101015	Bearing	2840	2
2	205101054	Bearing	3030_SF-2X	2
3	205101026	Bearing	3525_SF-2X	2
4	205101034	Bearing	4030_SF-2X	4
5	410200111	Spacer	6503-A3-B4	4
6	625000011	Master cylinder	YG90/102-50-625	1
7	625000012	Slave cylinder	YG75/85-45-625	1
8	614025045	Start plate	6604V2-A6-B1	1
9	410252401	Wheel shaft of start plate	6604V2-A6-B2	1
10	410250231	Start rotor wheel	6604V2-A6-B3	2
11	410252411	Mid shaft of start plate	6604V2-A6-B4	1
12	614025081	UP shaft of oil cylinder	6604V2-A6-B5	1
13	410252430	Spacer	6604V2-A6-B6	1
14	204301012	Circlip	D35-GB894_1	2
15	202206007	Hex socket tapping screw M8*12	M8X12-GB78	2

POS.	Code	Description	Specification	Qty
16	202111007	Hex socket flat head screw M8*20	M8X20_GB70_3	1
17	208106001	Oil cup	M8YB_GB9740_1	2
18	208106002	Pressed oil cup M8	M8YP_GB7940_4	4

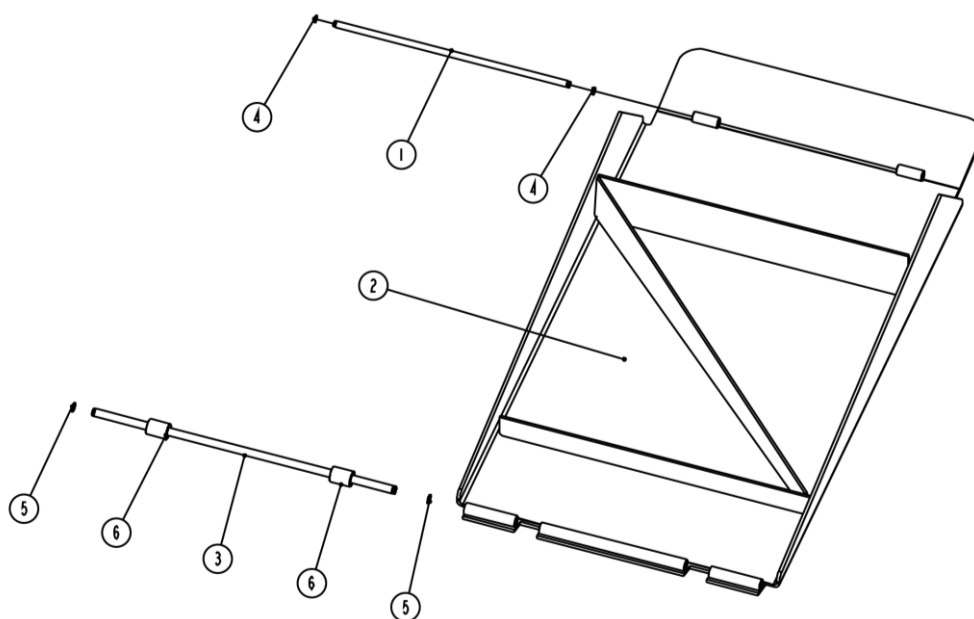


POS.	Code	Description	Specification	Qty
1	205103003	Flange bearing	2525_SF-1X	2
2	205101012	Bearing	2530_SF-1X	4
3	205101094	Bearing	2540_SF-2X	2
4	205101025	Bearing	3058_SF-2X	2
5	614027270B	Inside connection rod of the secondary lift	6435BWF-C05	1
6	410276701	DOWN holder of secondary lift	6435BWF-C03-20	2
7	410276711B	UP and DOWN wheel	6435BWF-C03-21	4
8	410276721C	Middle shaft	6435BWF-C03-22	2
9	410276731	Piston shaft	6435BWF-C03-23	1
10	410276813	Limit switch plate of secondary lift	6435BWF-C11-1	1
11	612019504	Bracket holder shaft	65012-A1-B5	2
12	614025046B	Outside bracket of the secondary lift	6604V2-A7-B1	1
13	614025048	Platform of the secondary arm	6604V2-A7-B3	1
14	410254430C	Anti-abrasive plate	6604V2-A7-B4	1
15	614025050	Extension platform	6604V2-A7-B5	1
16	410254541	DOWN shaft of the secondary lift	6604V2-A7-B7	1
17	204201005	Spring washer	D10_GB93	8

POS.	Code	Description	Specification	Qty
18	204101006	Flat washer	D10_GB95	12
19	204101012	Flat washer	D24-GB95	2
20	204301009	Circlip	D25-GB894_1	4
21	204301011	Circlip	D30-GB894_1	4
22	202109043	Hex socket cylinder head screw	M10X30_GB70	4
23	202109080	Hex socket cylinder head screw	M10X70_GB70	4
24	203101006	Hex nut	M10_GB6170	8
25	203103018	Hex locking nut	M24Z5	2
26	202109027	Hex socket button head screw	M8X12-GB70	2
27	202110004	Hex socket cap head screw	M8X12_GB70_2	2
28	208106001	Straight pressed oil cup	M8X1_GB7940_1	2
29	208106002	Pressed oil cup M8	M8YP_GB7940_4	2



POS.	Code	Description	Specification	Qty
1	205101023	Bearing	3050_SF-1X	2
2	205101025	Bearing	3058_SF-2X	2
3	410212090	Three way oil cylinder connector (small)	6603B-A3-B8	1
4	615025012	Drive cylinder of the jack	6604V2-A8-B1	1
5	410210011	Right angle connector	EEB-WJT-002	2



POS.	Code	Description	Specification	Qty
1	410250211	Ramp shaft	6604V2-A4-B12	1
2	614025055B	Ramp	6604V2-A9-B1	1
3	410250161	Ramp wheel shaft of the JACK	6604V2-A9-B2	1
4	204301002	Circlip	D12_GB894_2	2
5	204301012	Circlip	D15_GB894_1	2
6	420180010	Small wheel	MR30-A22-B5	2